

**NEW FRONTIERS  
IN AGRICULTURE**



# COMMODITY CLASSIC

**2024**

**Convention Center  
Sponsorship Opportunities**



# NEW FRONTIERS IN AGRICULTURE



#Classic24



## Artwork Deadlines & Guidelines

The information on this sheet is for the Convention Center. Paramount Convention Services will provide the printing & installation of your Convention Center branding.

The printing & installation of your graphics for branding opportunities at hotels will be handled by the hotel's in-house provider. Please contact Abby Podkul with Commodity Classic for deadlines and guidelines for hotel branding opportunities.

### Artwork Deadline: COB Friday, January 26th

3% surcharge per day after January 26th

### Sending Files:

Please send all graphics as print ready PDF(200dpi+) with NO BLEEDS.  
Make sure all fonts are outlined and all images are linked/embedded.

If you send a file at something other than 100% please make a note of this when sending your files.

All files must be uploaded to Paramount Convention Services' FTP.  
You will be provided with login and password information when you are ready to upload.

### Special Notes:

Window Clings have such a variance in size and very large quantities for some of the window banks. We are requesting that you send a mock-up along with the print ready artwork. This will ensure that your graphics are laid out correctly on site.

Column Wraps are built using Paramount's metal system. All panels will tuck into the metal structure .25" on all edges. If you have graphics that span the vertical or horizontal metal bars, please compensate for the gap of the bar (2").

**If you have any other questions or concerns regarding graphics,  
contact Sean Hoffert at Paramount Convention Services.**

**314.621.6677 or [SHoffert@paramountcs.com](mailto:SHoffert@paramountcs.com)**



# NEW FRONTIERS IN AGRICULTURE



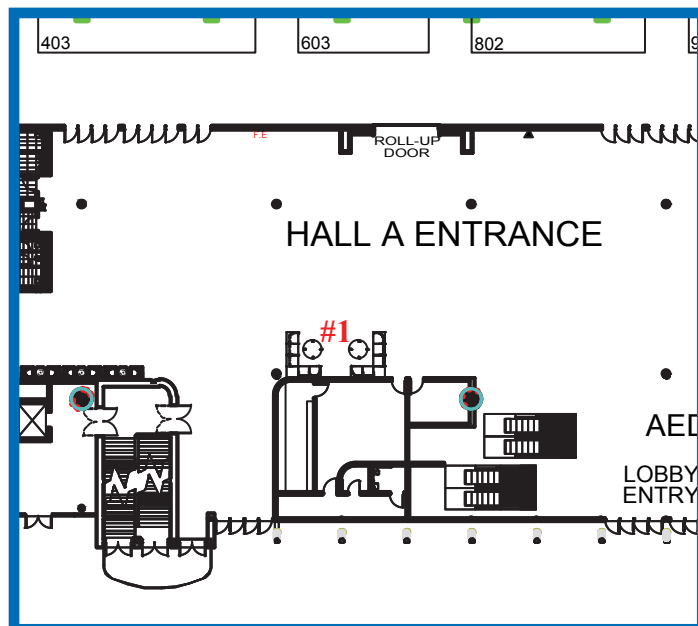
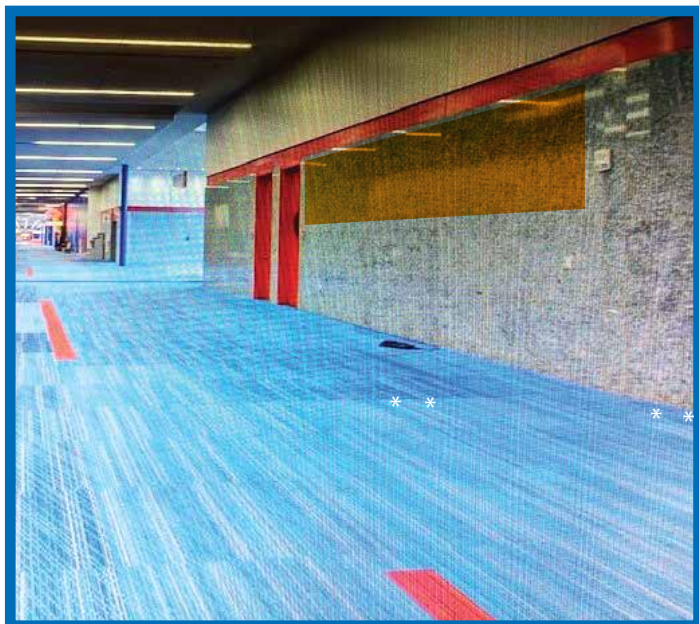
#Classic24



## Lobby A Lounge Seating with Device Charging Wall Cling & Charging Cube

OPPORTUNITY

#1



**Sponsorship Location Fee**  
\$7,500

**Printing & Installation Fee**  
\$1,980.58

### Wall Cling

20'9" x 54"

### Charging Cube

Top- 48" x 48"

Side- 48" x 17" (x4)



### Additional Info

This seating area is an ideal location for Commodity Classic guests to gather, rest, and recharge their devices. It is located just outside of the Level 1 Hall A Entrance, between the Grotto and Saltgrass restaurants and may see guests relaxing here as they wait for their meal tables, as well as when they need a rest from the show floor.

Sponsorship includes seating, one branded charging coffee table, one water cooler, and a wall cling above the seating. The coffee table will be branded with graphic clings featuring your company branding and includes power outlets for attendees to charge devices. You may provide a branded water cooler wrap or your branded cups for the water cooler.



# NEW FRONTIERS IN AGRICULTURE



#Classic24

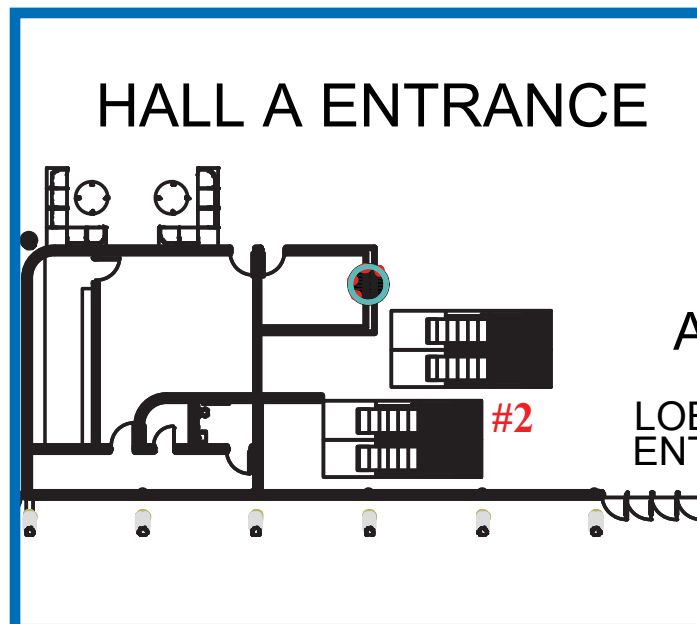
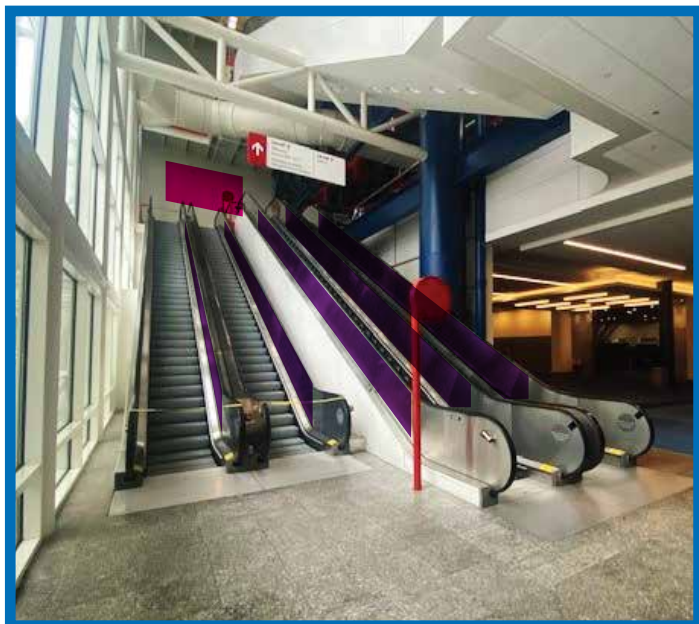


## Lobby A Escalators & Banner

Level 1 to Level 2

OPPORTUNITY

#2



### Sponsorship Location Fee

\$11,500

### Printing & Installation Fee

\$14,998.62

### Escalator Clings

Inside 43' 9" x 26" (x8)

Exterior side of metal railing above white wall 42' x 26"

### Banner

22' x 9'4"

### Additional Info

Escalator goes between Level 1 to Level 2. Banner is on level 2 at top of escalator.





# NEW FRONTIERS IN AGRICULTURE



#Classic24

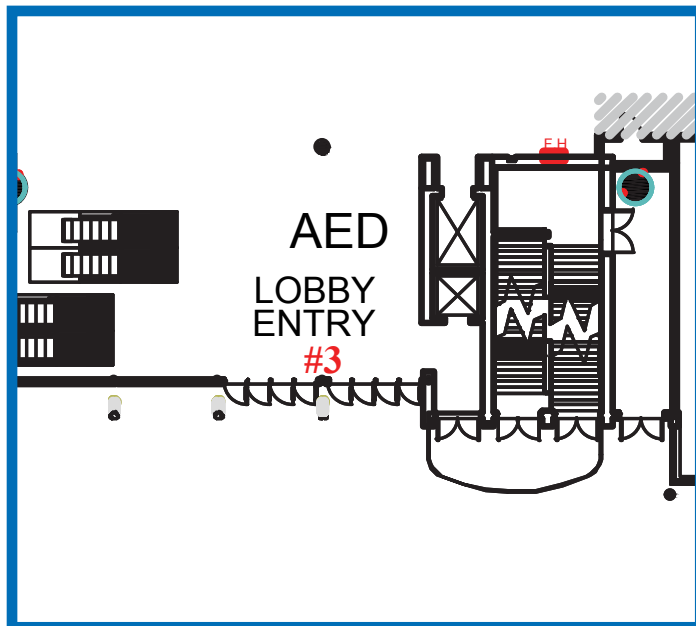


## Lobby A Lobby Entry Windows

Facing In, Sliding Doors, Perforated Material

OPPORTUNITY

#3



**Sponsorship Location Fee**  
\$6,000

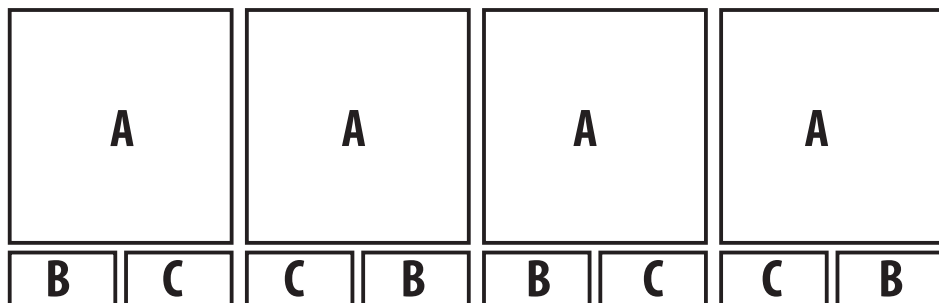
**Printing & Installation Fee**  
\$3,334.16

### Window Clings

- A- 76.5" X 75"
- B- 38.5" X 15.5"
- C- 37.75" X 15.5"
- D- 35.5" X 15.25"

### Additional Info

Level 1, Lobby A, facing in.





# NEW FRONTIERS IN AGRICULTURE



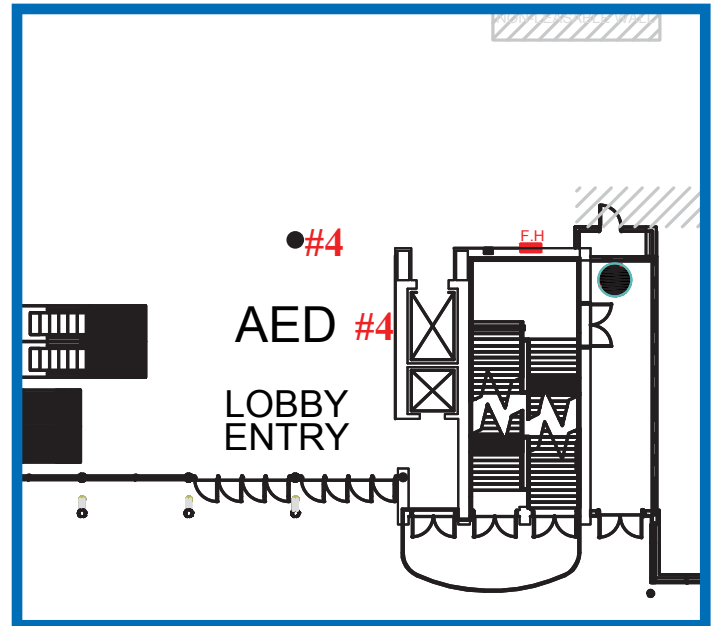
#Classic24



## Lobby A Column Wrap & Wall Cling In Front of Lobby A Entry & Escalators

OPPORTUNITY

#4



**Sponsorship Location Fee**  
\$10,000

**Printing & Installation Fee**  
\$2,549.68

### Column Wrap

29.75" x 92.125" Panel (x4)

### Wall Cling

10' x 12'

### Additional Info

Level 1, Lobby A, in front of lobby entry & escalators.  
Sponsorship location includes (1) column and (1) cling.

92.125"



29.75"



# NEW FRONTIERS IN AGRICULTURE



#Classic24

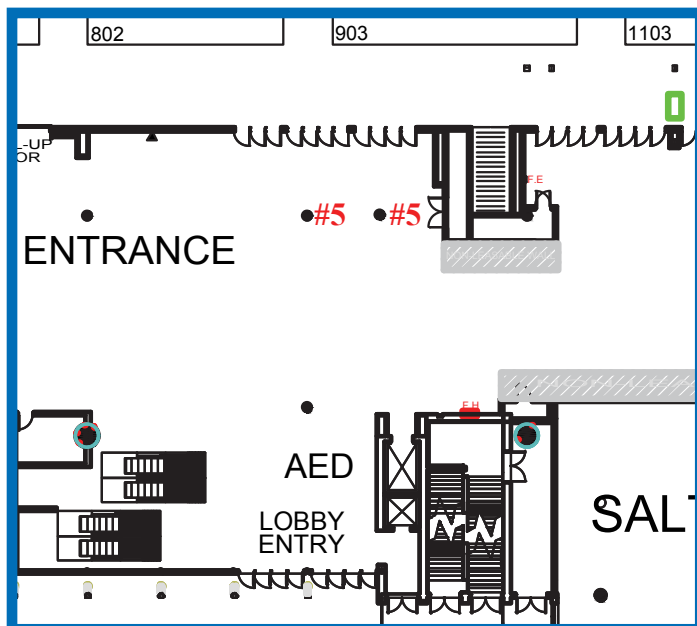


## Lobby A Column Wraps (2)

To right of Trade Show Hall A entrance

OPPORTUNITY

#5



## Sponsorship Location Fee

\$9,250

## Printing & Installation Fee

\$1,979.36

## Column Wrap

29.75" x 92.125" Panel (x8) (4 panels per column)

## Additional Info

Level 1, Lobby A, to the right of Hall A Trade Show entrance.  
Sponsorship location includes (2) columns

92.125"



29.75"



# NEW FRONTIERS IN AGRICULTURE



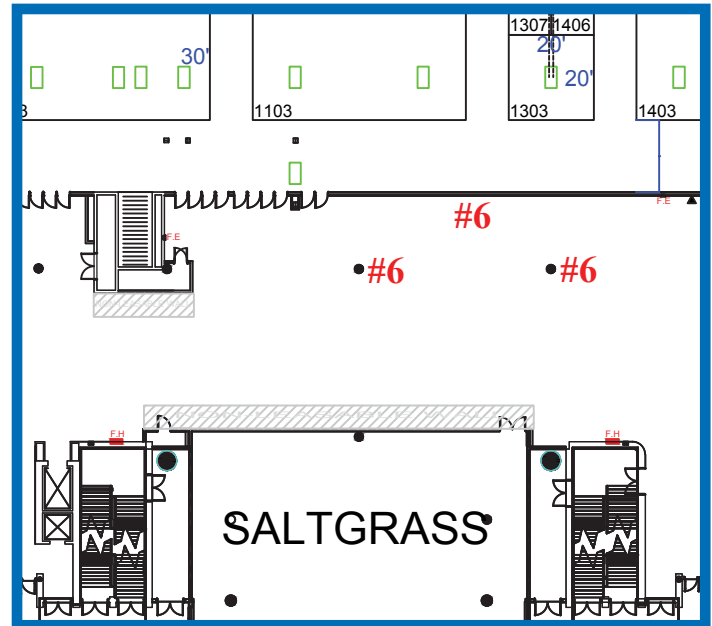
#Classic24



## Lobby A Column Wraps (2) & Banner Opposite Saltgrass Restaurant

OPPORTUNITY

#6



**Sponsorship Location Fee**  
\$15,000

**Printing & Installation Fee**  
\$5,279.36

### Column Wrap

2 Columns  
29.75" x 92.125" Panel (x8) (4 panels per column)

### Banner

40' x 7'6"

92.125"



29.75"

### Additional Info

Level 1, Lobby A, across from & in hallway  
in front of Saltgrass Restaurant.





# NEW FRONTIERS IN AGRICULTURE



#Classic24

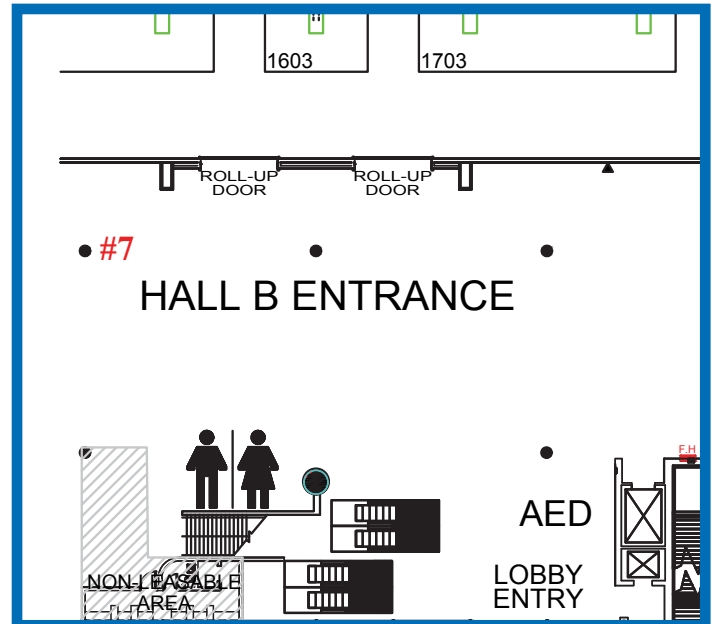


## Lobby B Column Wrap

To the left of Hall B Trade Show Entrance

OPPORTUNITY

#7



## Sponsorship Location Fee

\$5,000

## Printing & Installation Fee

\$989.68

## Column Wrap

29.75" x 92.125" Panel (x4)

## Additional Info

Level 1, Lobby B, to the left of Hall B Trade Show entrance.  
1 column.

92.125"



29.75"



# NEW FRONTIERS IN AGRICULTURE



#Classic24

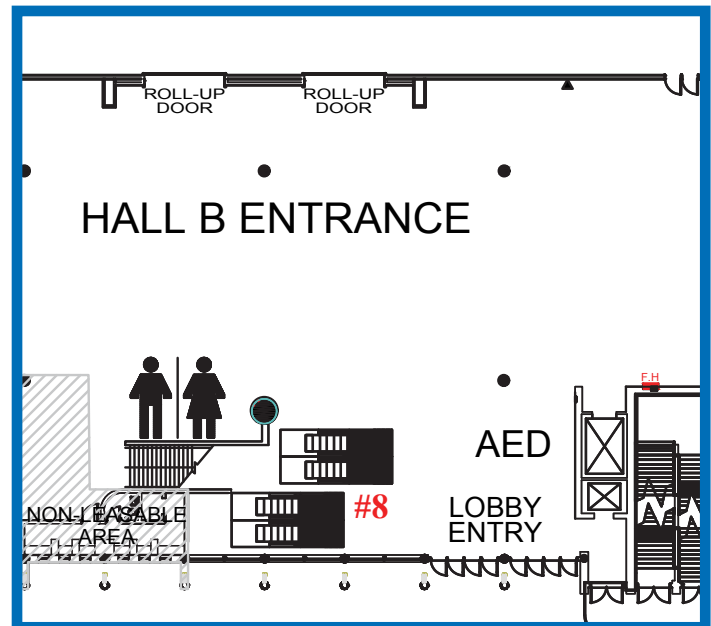
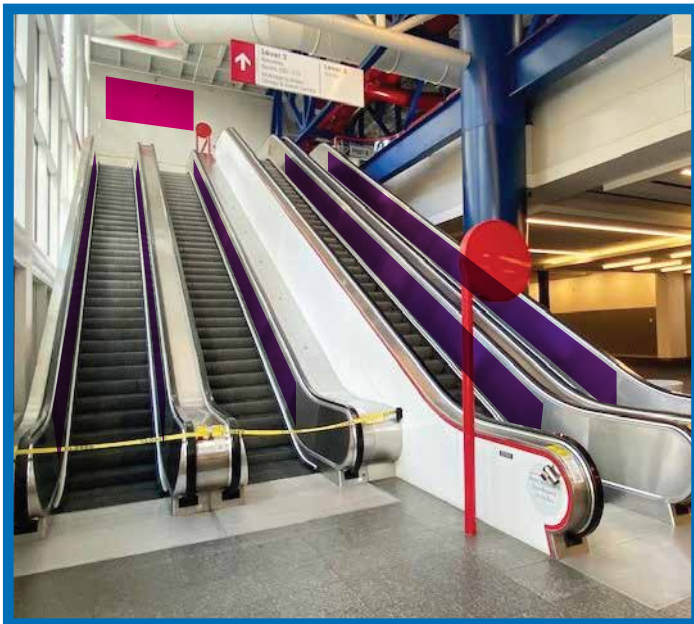


## Lobby B Escalators & Banner

Level 1 to Level 2

OPPORTUNITY

#8



### Sponsorship Location Fee

\$11,500

### Printing & Installation Fee

\$13,549.06

### Escalator Clings

Inside- 46'1" x 24.5" (x8)

Flat Metal- 59'8" x 11.5" (x2)

### Banner

22' x 9'4"

### Additional Info

Level 1, Lobby B, near Hall B Trade Show Entrance.

Escalator goes between Level 1 and Level 2.

Banner is on level 2 at the top of escalator.



# NEW FRONTIERS IN AGRICULTURE



#Classic24

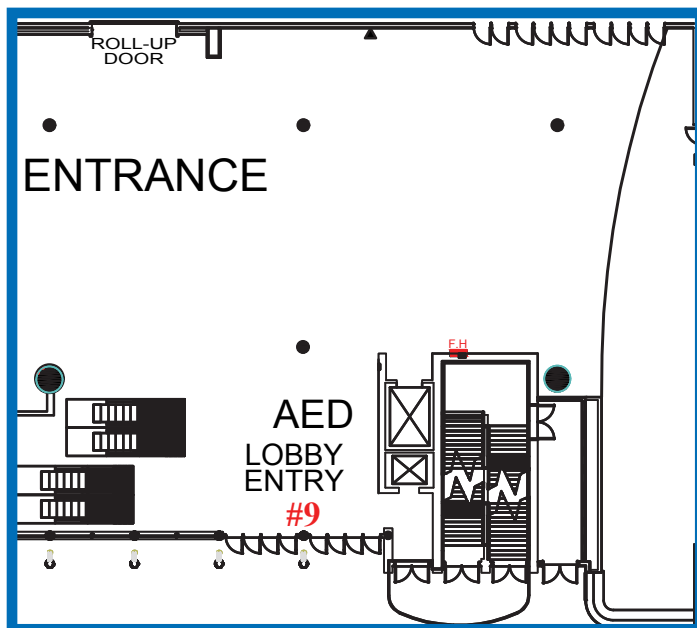


## Lobby B Lobby Entry Windows

Facing in, Sliding Doors, Perforated Material

OPPORTUNITY

#9



**Sponsorship Location Fee**  
\$6,000

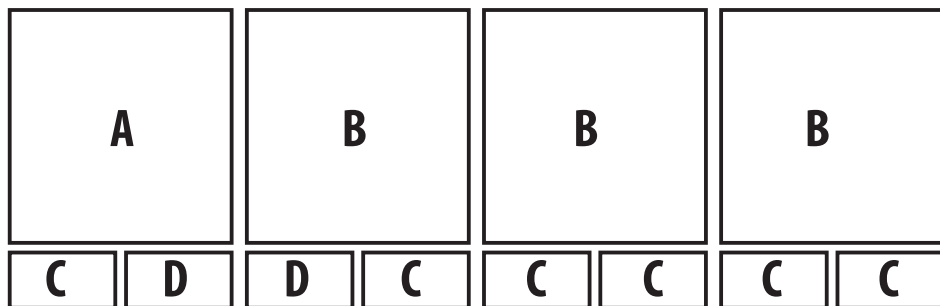
**Printing & Installation Fee**  
\$3,579.12

### Window Clings

- A- 76" X 78"
- B- 78" X 78"
- C- 40" X 18"
- D- 38.25" X 18"
- E- 36.75" X 15.25"

### Additional Info

Level 1, Lobby B.





# NEW FRONTIERS IN AGRICULTURE



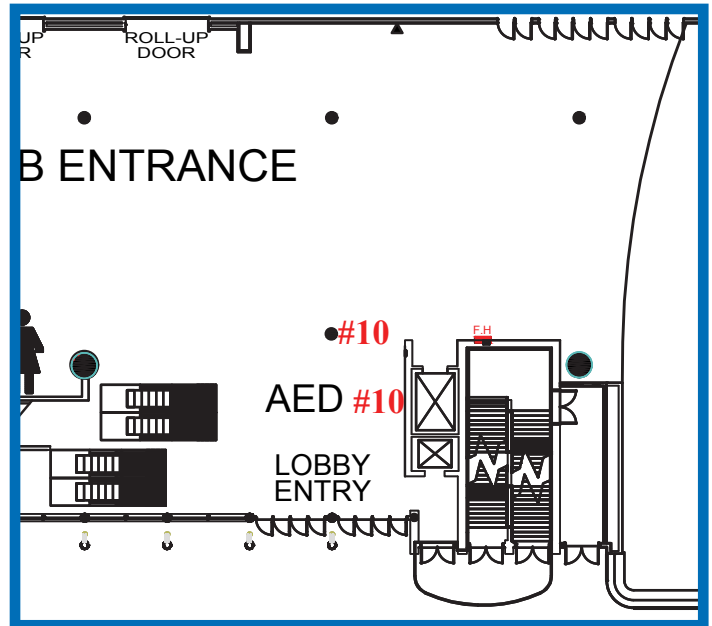
#Classic24



## Lobby B Column Wrap & Wall Cling In Front of Lobby B Entry & Escalators

OPPORTUNITY

#10



**Sponsorship Location Fee**  
\$10,000

**Printing & Installation Fee**  
\$2,549.68

### Column Wrap

29.75" x 92.125" Panel (x4)

### Wall Cling

10' x 12'

### Additional Info

Level 1, Lobby B, between Hall B & Hall C Trade Show entrances and in front of lobby entry & escalators. Sponsorship location includes (1) column and (1) wall cling.

92.125"



29.75"





# NEW FRONTIERS IN AGRICULTURE



#Classic24

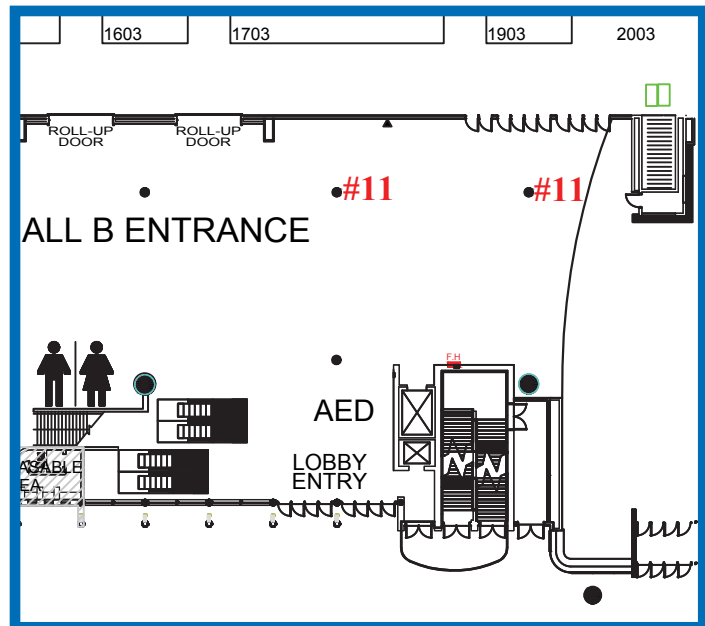


## Lobby B Column Wraps (2)

To the right of Hall B Trade Show Entrance

OPPORTUNITY

#11



**Sponsorship Location Fee**  
**\$9,250**

**Printing & Installation Fee**  
**\$1,979.36**

### Column Wrap

29.75" x 92.125" Panel (x8) (4 panels per column)

### Additional Info

Level 1, Lobby B, to the right of Hall B Trade Show entrance.  
Sponsorship location includes (2) columns.

92.125"



29.75"



# NEW FRONTIERS IN AGRICULTURE



#Classic24

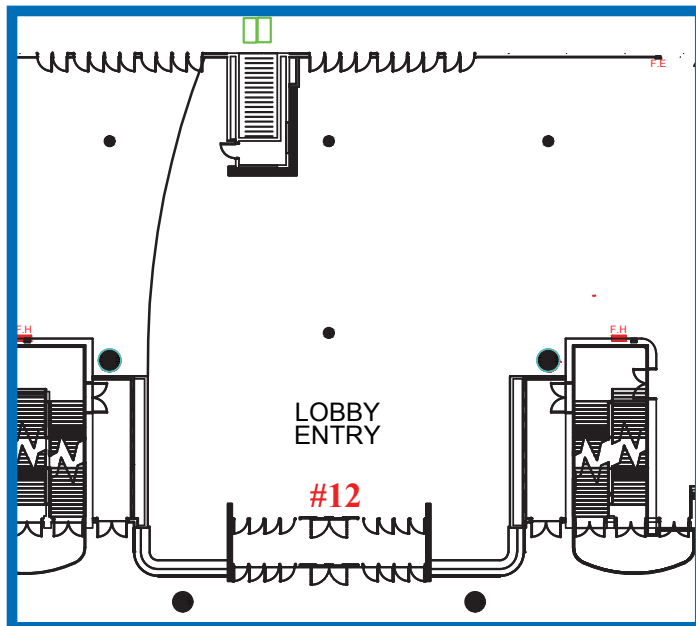


## Lobby C Entry Door Windows

Between Lobbies B & C, Facing In, Sliding Doors and Push Doors, Perforated Material

OPPORTUNITY

#12



### Sponsorship Location Fee

\$8,000

### Printing & Installation Fee

\$3,389.10

### Window Clings

A- 73" X 72"

B- 71" X 72"

C- 24.5" X 29"

D- 29" X 29"

E- 30.5" X 29"

### Additional Info

Level 1, between Lobbies B & C.

Window Clings face in.





# NEW FRONTIERS IN AGRICULTURE



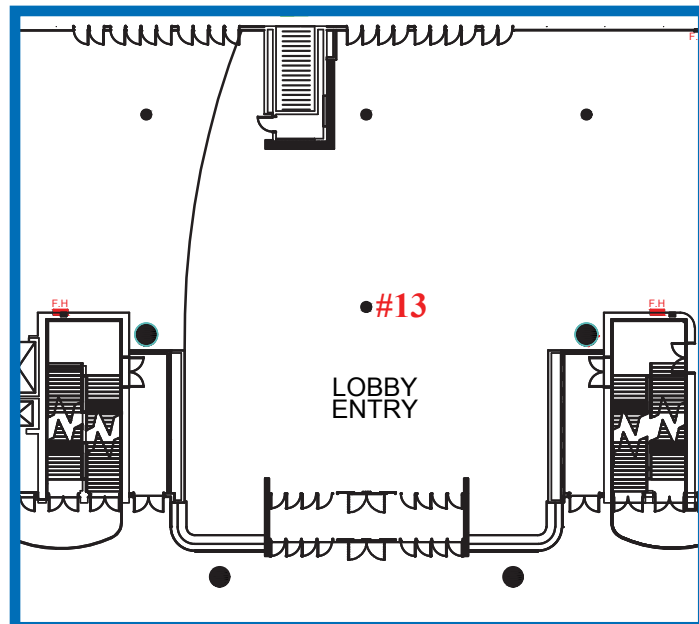
#Classic24



## Lobby B/C Column Wrap Between Lobbies B & C

OPPORTUNITY

#13



**Sponsorship Location Fee**  
\$5,000

**Printing & Installation Fee**  
\$989.68

### Column Wrap

29.75" x 92.125" Panel (x4)

### Additional Info

Level 1, between Lobbies B & C, in front of lobby entry doors.  
1 column.

92.125"



29.75"



# NEW FRONTIERS IN AGRICULTURE



#Classic24

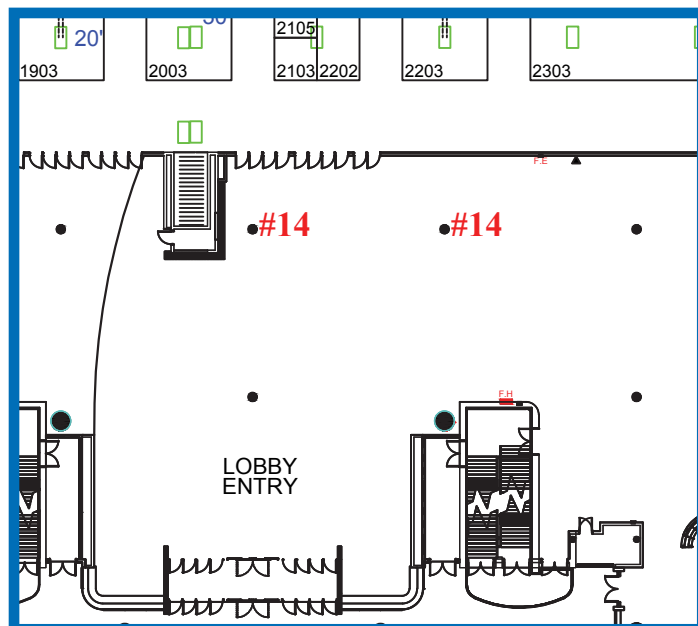


## Lobby B/C Column Wraps (2)

Between Convention Center Built In Video Screen & Hall C Trade Show Entrance

OPPORTUNITY

#14



### Sponsorship Location Fee

\$9,250

### Printing & Installation Fee

\$1,979.36

### Column Wrap

29.75" x 92.125" Panel (x8) (4 panels per column)

### Additional Info

Level 1, between Lobbies B & C, in front of lobby entry doors, to the right of convention center's built in video screen and to the left of Hall C Trade Show Entrance.

Sponsorship location includes (2) columns.

92.125"



29.75"





# NEW FRONTIERS IN AGRICULTURE



#Classic24

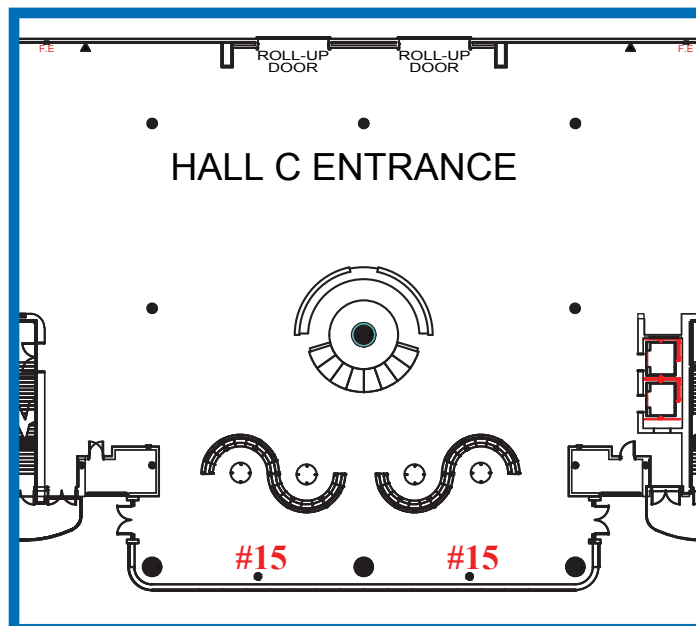
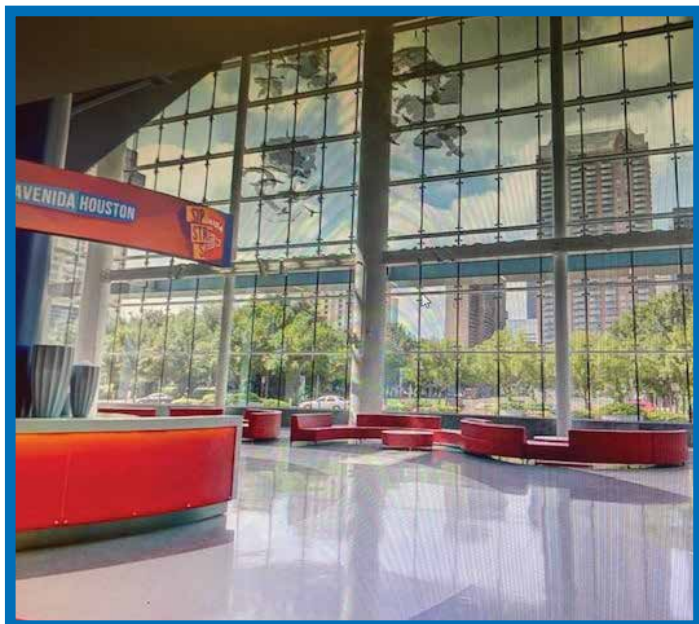


## Lobby C Banners

Surrounding Video Wall

OPPORTUNITY

#15



## Sponsorship Location Fee

\$10,000 Each

## Printing & Installation Fee

\$TBD

## Banner

TBD

## Additional Info

Level 1, Lobby C across from Hall C Trade Show Entrance, hanging on either side of main Commodity Classic Video Wall. Sponsors may purchase one or both banners.



# NEW FRONTIERS IN AGRICULTURE



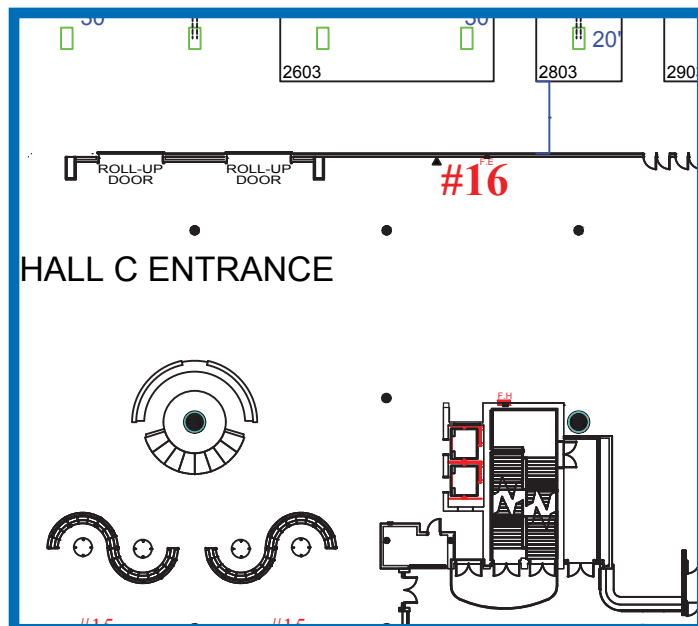
#Classic24



## Lobby C Lounge Seating with Device Charging To the Right of Hall C Trade Show Entrance

OPPORTUNITY

#16



**Sponsorship Location Fee**  
\$10,000

**Printing & Installation Fee**  
\$1,659.96

### Charging Cube

48" x 48" top  
48" x 17" Sides (x4)

### Banner

20' X 6'

### Additional Info

This seating area is an ideal location for Commodity Classic guests to gather, rest, and recharge their devices. It is located just to the right of the Level 1 Hall C Trade Show entrance.

Sponsorship includes seating, one branded charging coffee table, one water cooler, and a banner above the seating. The coffee table will be branded with graphic clings featuring your company branding and includes power outlets for attendees to charge devices. You may provide a branded water cooler wrap or your branded cups for the water cooler.





# NEW FRONTIERS IN AGRICULTURE



#Classic24

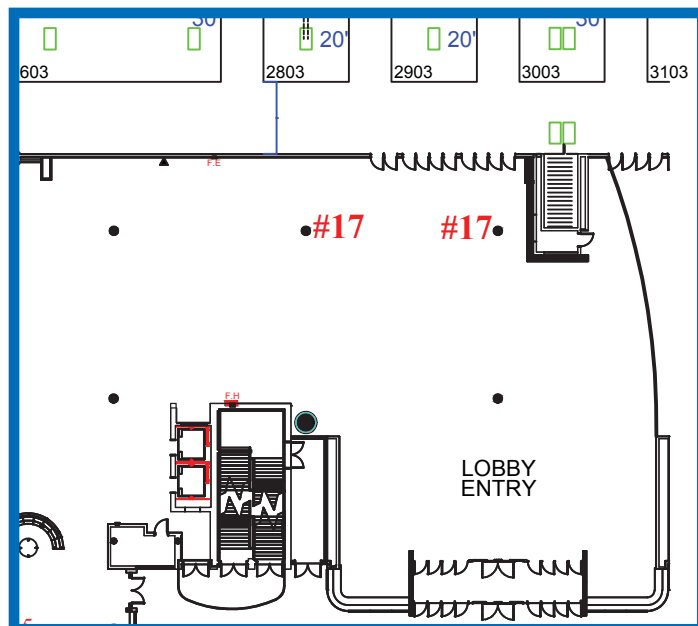


## Lobby C Column Wraps (2)

To the Right of Hall C Trade Show Entrance and Charging Area

OPPORTUNITY

#17



### Sponsorship Location Fee

\$9,250

### Printing & Installation Fee

\$1,979.36

### Column Wrap

29.75" x 92.125" Panel (x8) (4 panels per column)

### Additional Info

Level 1, Lobby C, to the right of Hall C Trade Show entrance and charging area. Sponsorship location includes (2) columns.

92.125"



29.75"



# NEW FRONTIERS IN AGRICULTURE



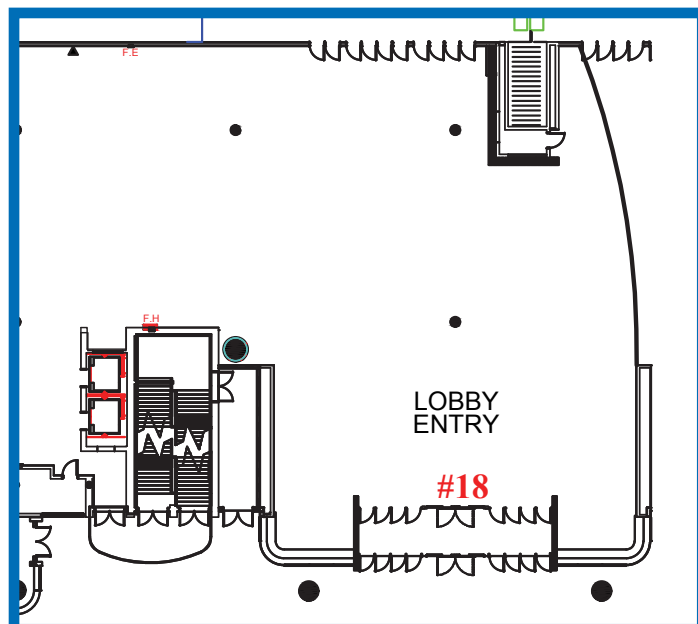
#Classic24

## Lobby C Entry Windows

Between Lobbies C & D, Facing In, Sliding Doors and Push Doors, Perforated Material

OPPORTUNITY

#18



### Sponsorship Location Fee

\$8,000

### Printing & Installation Fee

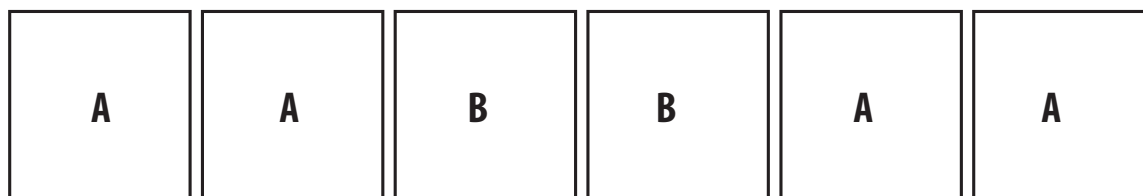
\$3,389.10

### Window Clings

- A- 73" X 72"
- B- 71" X 72"
- C- 24.5" X 29"
- D- 29" X 29"
- E- 30.5" X 29"

### Additional Info

Level 1, between Lobbies C & D.  
Window clings face in.







# NEW FRONTIERS IN AGRICULTURE



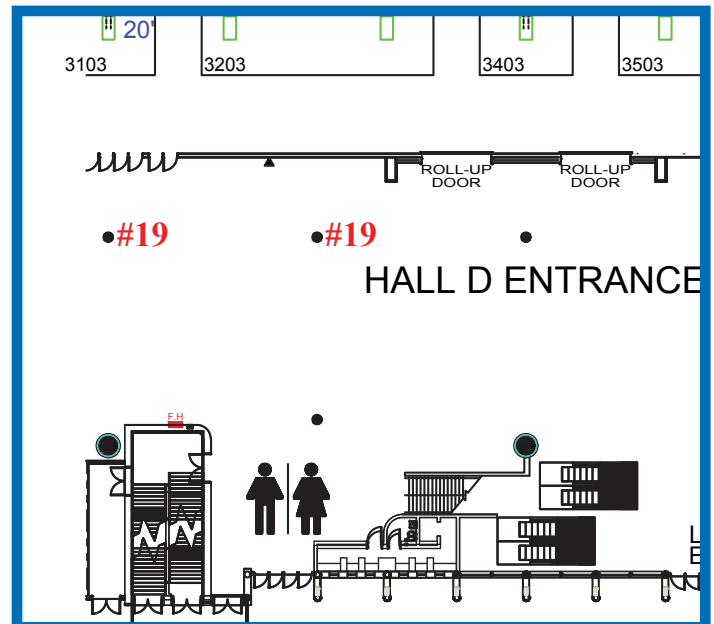
#Classic24



## Lobby D Column Wraps (2) To the Left of Hall D Trade Show Entrance

OPPORTUNITY

#19



**Sponsorship Location Fee**  
**\$9,250**

**Printing & Installation Fee**  
**\$1,979.36**

### Column Wrap

29.75" x 92.125" Panel (x8) (4 panels per column)

### Additional Info

Level 1, Lobby D, to the left of Hall D Trade Show entrance.  
Sponsorship location includes (2) columns.

92.125"



29.75"



# NEW FRONTIERS IN AGRICULTURE



#Classic24

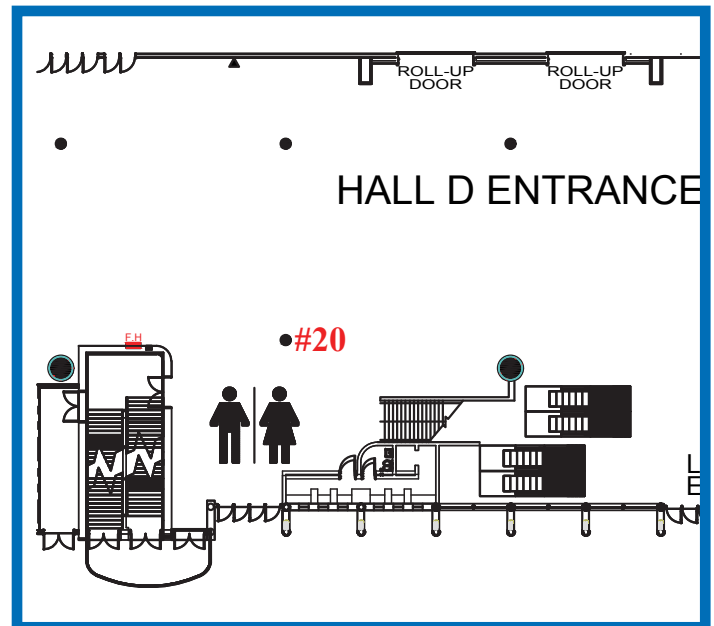


## Lobby D Column Wrap

In Front of Stairs Leading Down to the Restrooms

OPPORTUNITY

#20



### Sponsorship Location Fee

\$5,000

### Printing & Installation Fee

\$989.68

### Column Wrap

29.75" x 92.125" Panel (x4)

### Additional Info

Level 1, Lobby D, in front of stairs leading down to restrooms.  
1 column.

92.125"



29.75"



# NEW FRONTIERS IN AGRICULTURE



#Classic24

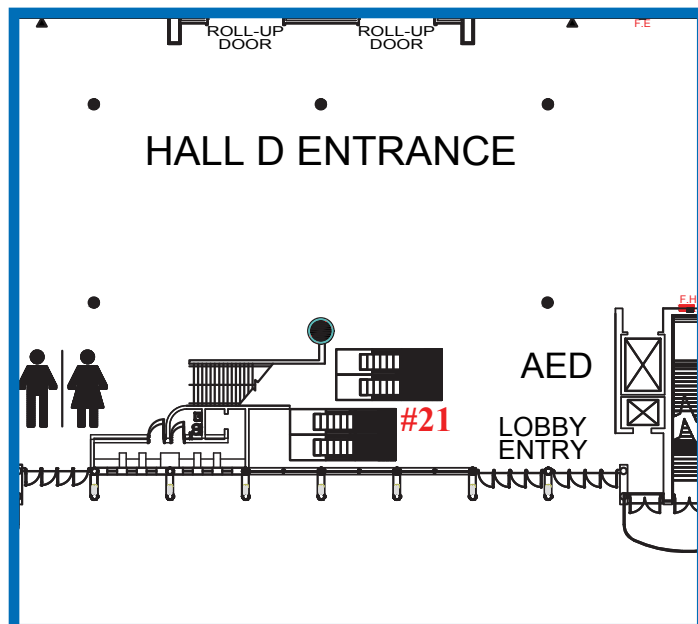
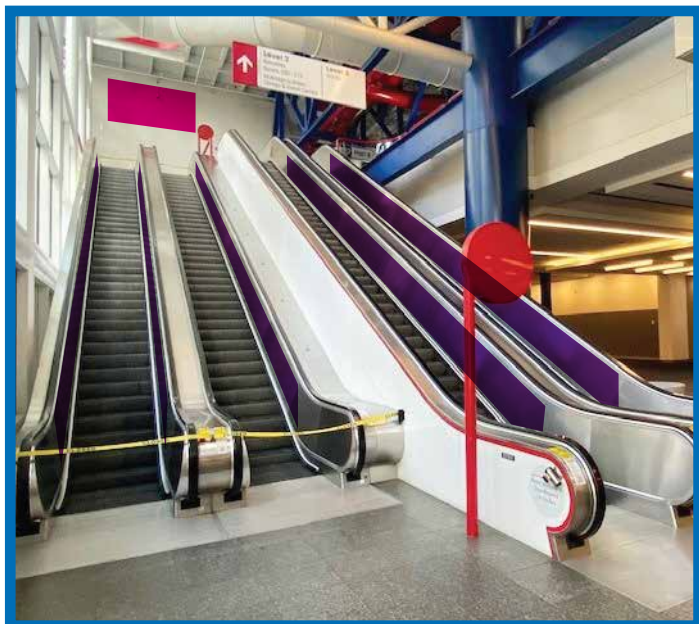


## Lobby D Escalators & Banner

Level 1 to Level 2

OPPORTUNITY

#21



### Sponsorship Location Fee

\$11,500

### Printing & Installation Fee

\$13,559.40

### Escalator Clings

Inside- 46'1" x 24.5" (x8)

Flat Metal- 59'8" x 11.5" (x2)

### Additional Info

Level 1, Lobby D, facing Hall D Trade Show Entrance.

Escalator goes between Level 1 to Level 2 near Commodity Classic Registration on Level 2. Banner is on level 2 at the top of the escalator.

### Banner

22' x 9'4"





# NEW FRONTIERS IN AGRICULTURE



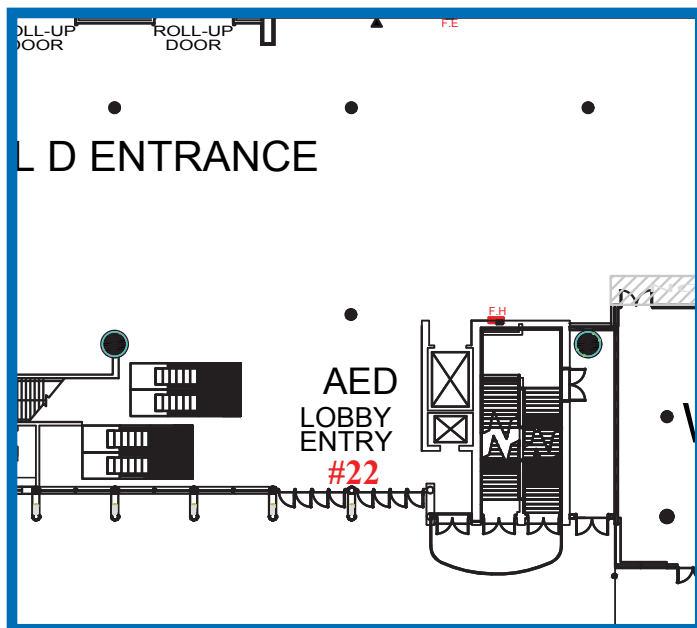
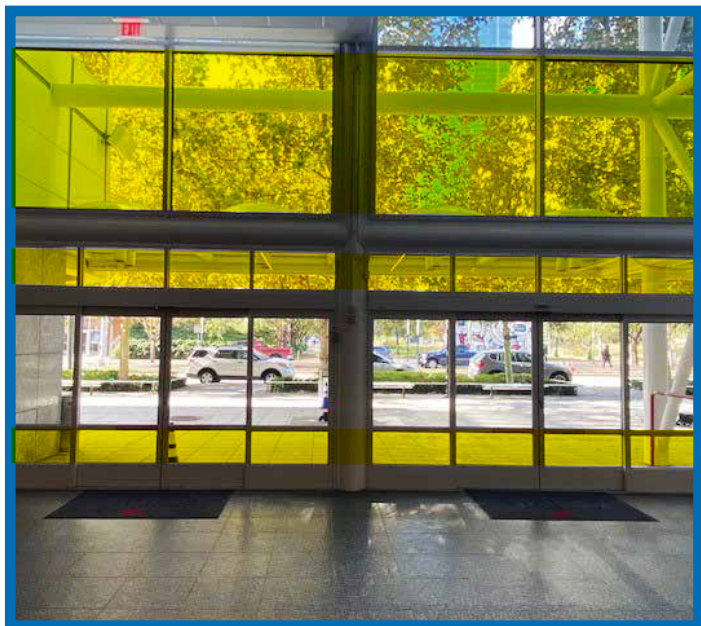
#Classic24

## Lobby D Lobby Entry Windows

Facing In, Sliding Doors, Perforated Material

OPPORTUNITY

#22



**Sponsorship Location Fee**  
\$6,000

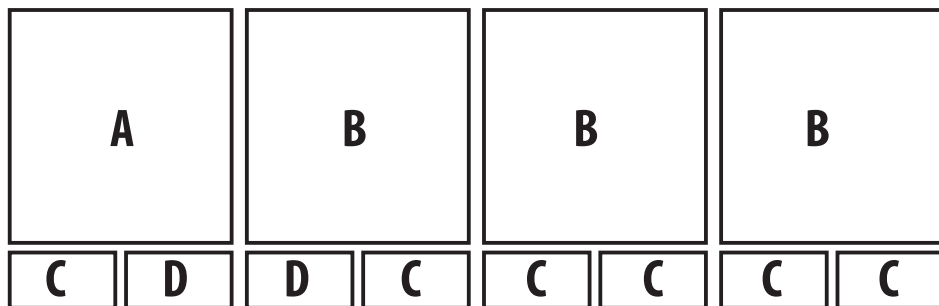
**Printing & Installation Fee**  
\$3,466.67

### Window Clings

- A- 76.5" X 78"
- B- 78.5" X 78"
- C- 40" X 17.5"
- D- 38.5" X 17.5"
- E- 36" X 15.5"
- F- 37" X 15.5"

### Additional Info

Level 1, Lobby D. Clings face in.







# NEW FRONTIERS IN AGRICULTURE



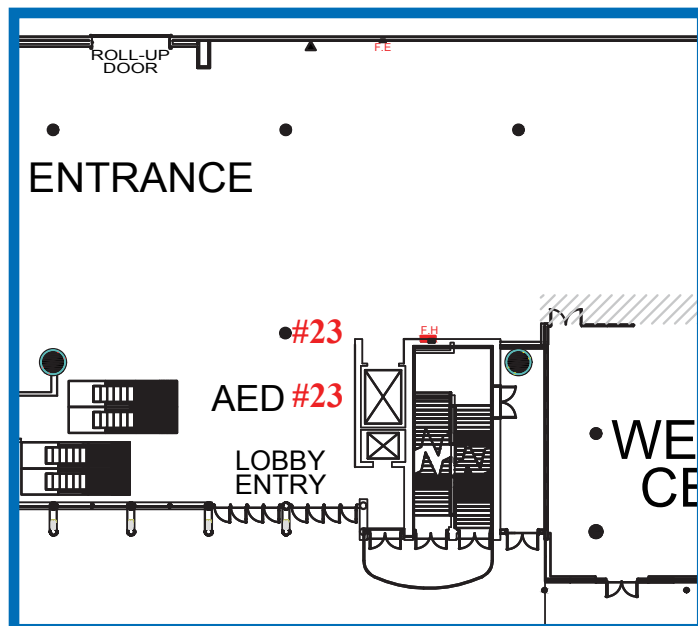
#Classic24



## Lobby D Column Wrap & Wall Cling In Front of Lobby D Entrance & Escalators

OPPORTUNITY

#23



**Sponsorship Location Fee**  
\$10,000

**Printing & Installation Fee**  
\$2,549.68

### Column Wrap

29.75" x 92.125" Panel (x4)

### Wall Cling

10' x 12'

### Additional Info

Level 1, Lobby D, in front of lobby entrance & escalators.  
Sponsorship location includes (1) column and (1) wall cling.

92.125"



29.75"



# NEW FRONTIERS IN AGRICULTURE



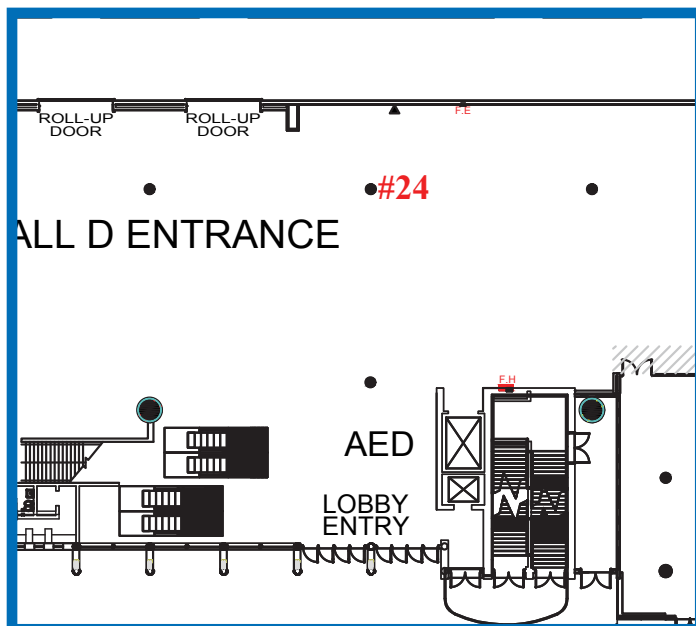
#Classic24



## Lobby D Column Wrap To the Right of Hall D Trade Show Entrance

OPPORTUNITY

#24



**Sponsorship Location Fee**  
\$5,000

**Printing & Installation Fee**  
\$989.68

### Column Wrap

29.75" x 92.125" Panel (x4)

### Additional Info

Level 1, Lobby D, to the right of Hall D Trade Show Entrance.  
1 column.

92.125"



29.75"



# NEW FRONTIERS IN AGRICULTURE



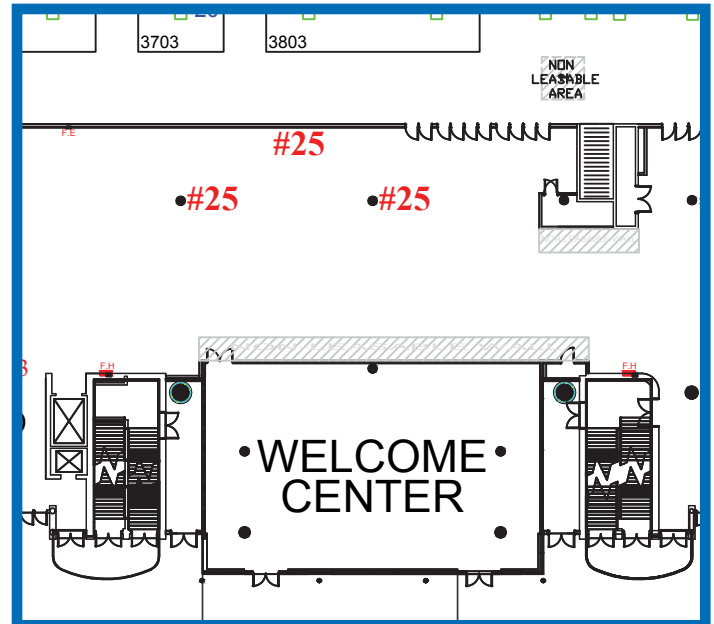
#Classic24



## Lobby D Column Wraps (2) & Banner Across from Welcome Center

OPPORTUNITY

#25



**Sponsorship Location Fee**  
\$15,000

**Printing & Installation Fee**  
\$3,299.36

### Column Wrap

29.75" x 92.125" Panel (x8) (4 panels per column)

### Banner

20' x 6'

### Additional Info

Level 1, Lobby D, Across from convention center's Welcome Center. Sponsorship location includes (2) columns and (1) banner.

92.125"



29.75"





# NEW FRONTIERS IN AGRICULTURE



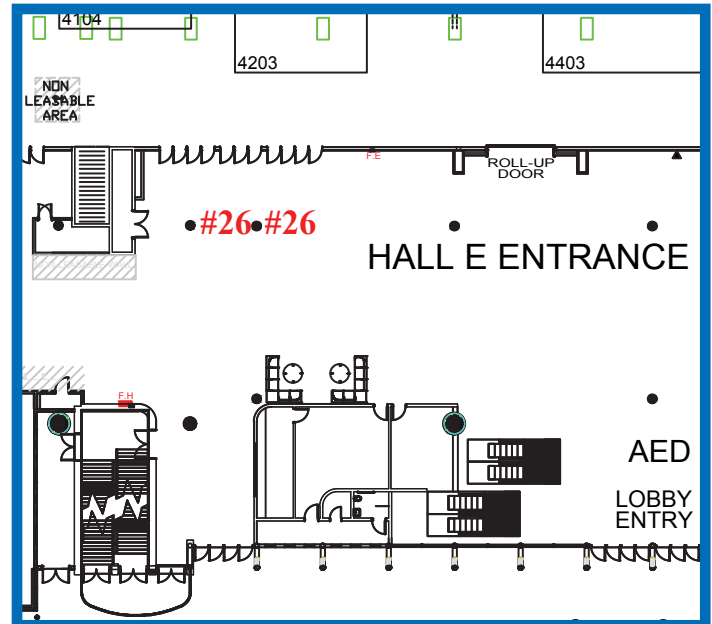
#Classic24



## Lobby E Column Wraps (2) To the Left of Hall E Trade Show Entrance

OPPORTUNITY

#26



**Sponsorship Location Fee**  
\$9,250

**Printing & Installation Fee**  
\$1,979.36

### Column Wrap

29.75" x 92.125" Panel (x8) (4 panels per column)

### Additional Info

Level 1, Lobby E, to the left of Hall E Trade Show Entrance.  
Sponsorship location includes (2) columns.

92.125"



29.75"





# NEW FRONTIERS IN AGRICULTURE



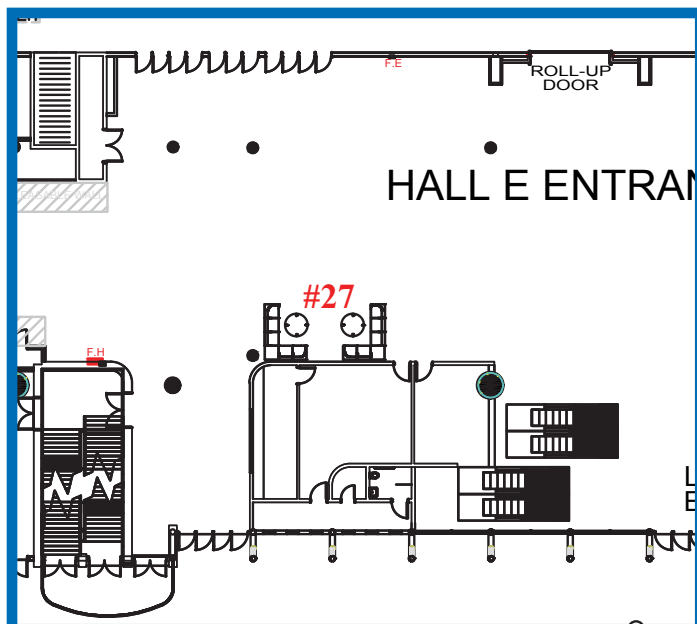
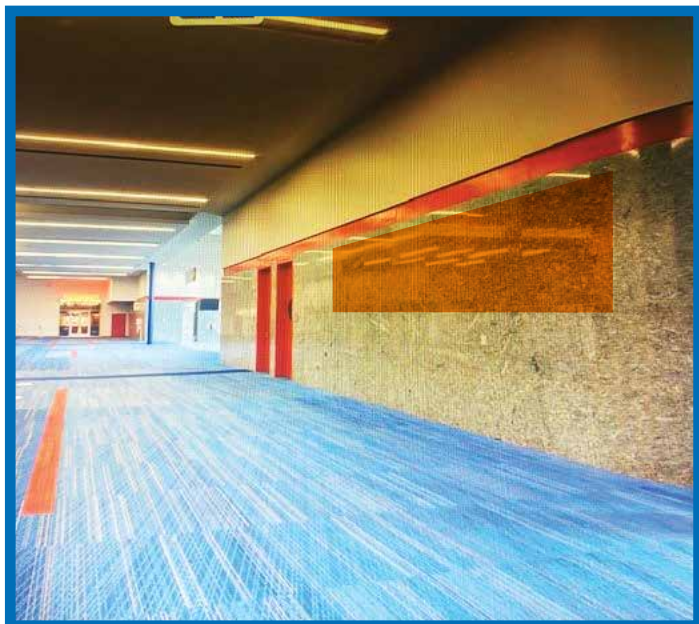
#Classic24



## Lobby E Lounge Seating with Device Charging Wall Cling and Charging Cube

OPPORTUNITY

#27



**Sponsorship Location Fee**  
\$7,500

**Printing & Installation Fee**  
\$1,980.58

### Wall Cling

20'9" x 54"

### Charging Cube

Top- 48" x 48"

Side- 48" x 17" (x4)



### Additional Info

This seating area is an ideal location for Commodity Classic guests to gather, rest, and recharge their devices. It is located near the Level 1 Hall E Trade Show Entrance, also not far from Pappadeaux Seafood Kitchen.

Sponsorship includes seating, one branded charging coffee table, one water cooler, and a wall cling above the seating. The coffee table will be branded with graphic clings featuring your company branding and includes power outlets for attendees to charge devices. You may provide a branded water cooler wrap or your branded cups for the water cooler.



# NEW FRONTIERS IN AGRICULTURE



#Classic24

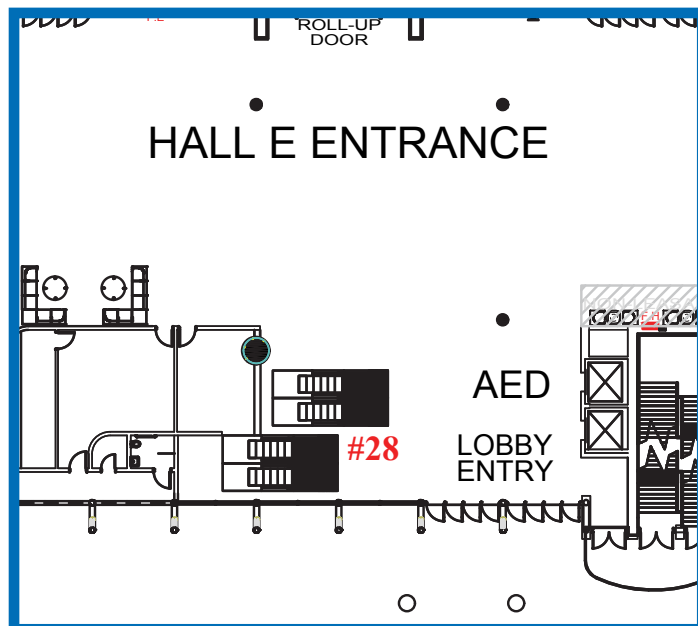
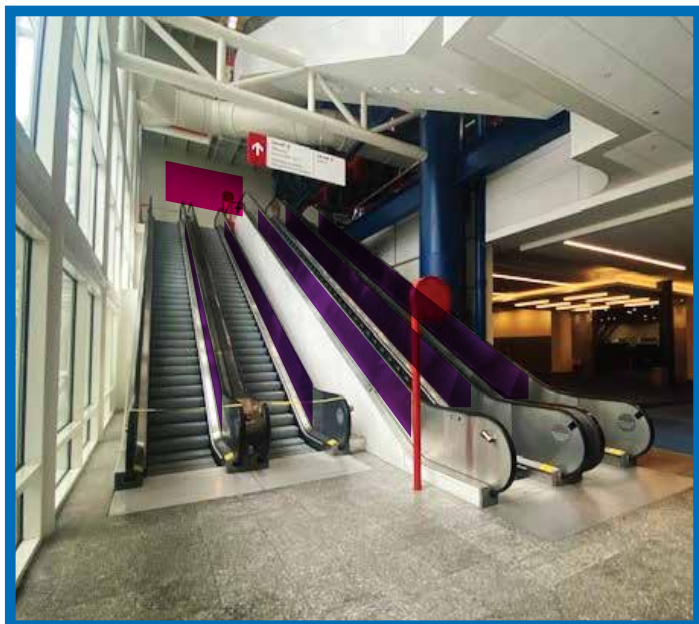


## Lobby E Escalators & Banner

Level 1 to Level 2

OPPORTUNITY

#28



### Sponsorship Location Fee

\$11,500

### Printing & Installation Fee

\$14,998.62

### Escalators

Inside- 43'9" x 26.5" (x8)

Exterior side of metal railing above white wall- 42' x 26"

### Banner

22' x 9'4"

### Additional Info

Level 1, Lobby E, across from Hall E Trade Show Entrance.

Escalator goes between Level 1 to Level 2.



# NEW FRONTIERS IN AGRICULTURE



#Classic24

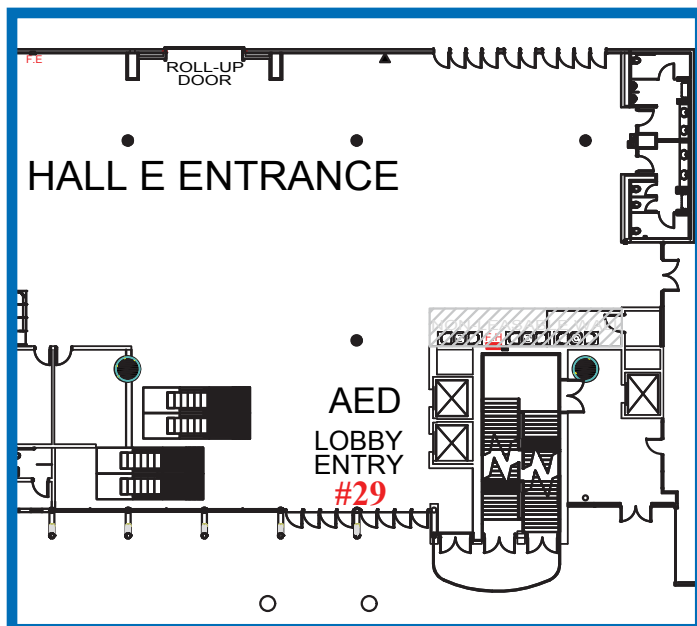


## Lobby E Lobby Entry Windows

Facing In, Sliding Doors, Perforated Material

OPPORTUNITY

#29



**Sponsorship Location Fee**  
\$6,000

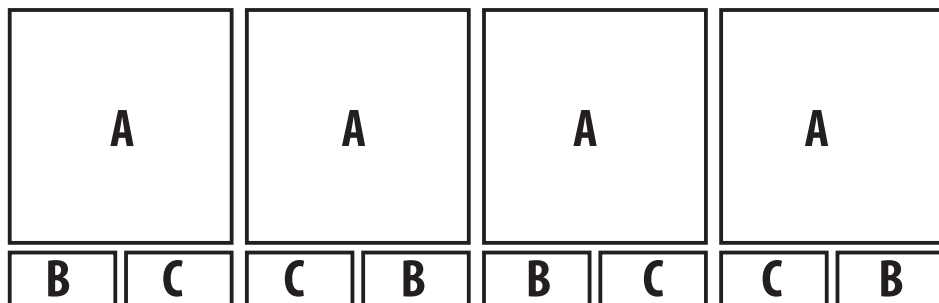
**Printing & Installation Fee**  
\$3,389.32

### Window Clings

- A- 76.5" X 76.5"
- B- 38.5" X 15.5"
- C- 37.75" X 15.5"
- D- 35.5" X 15.5"

### Additional Info

Level 1, Lobby E







# NEW FRONTIERS IN AGRICULTURE



#Classic24

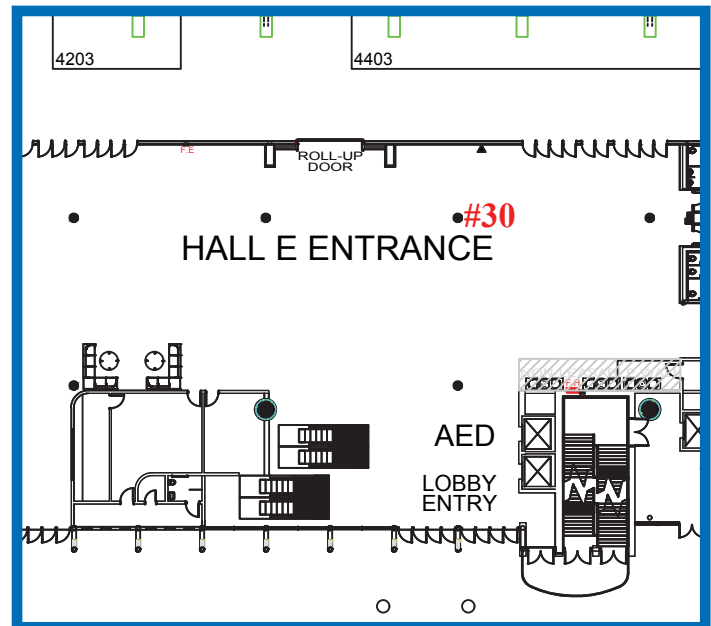


## Lobby E Column Wrap

To the Right of Hall E Trade Show Entrance

OPPORTUNITY

#30



## Sponsorship Location Fee

\$5,000

## Printing & Installation Fee

\$989.68

## Column Wrap

29.75" x 92.125" Panel (x4)

## Additional Info

Level 1, Lobby E, to the right of Hall E Trade Show Entrance, near Pappadeaux Seafood Kitchen. 1 column.

92.125"



29.75"





# NEW FRONTIERS IN AGRICULTURE



#Classic24

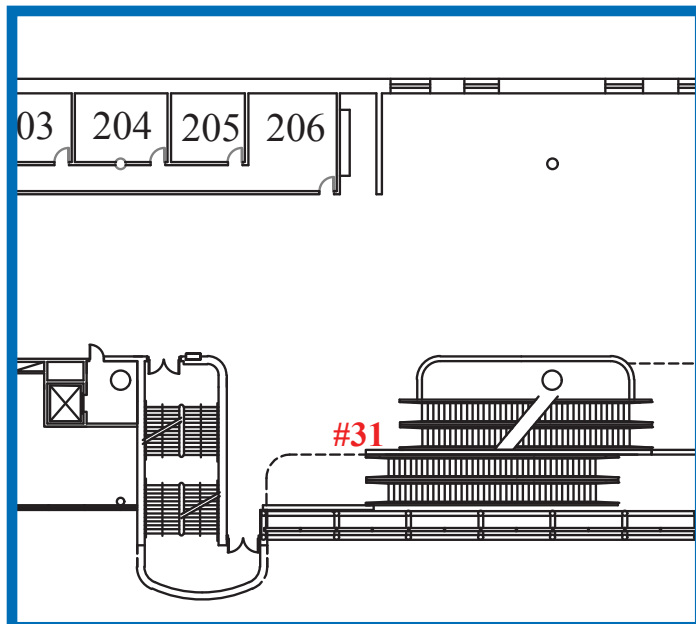
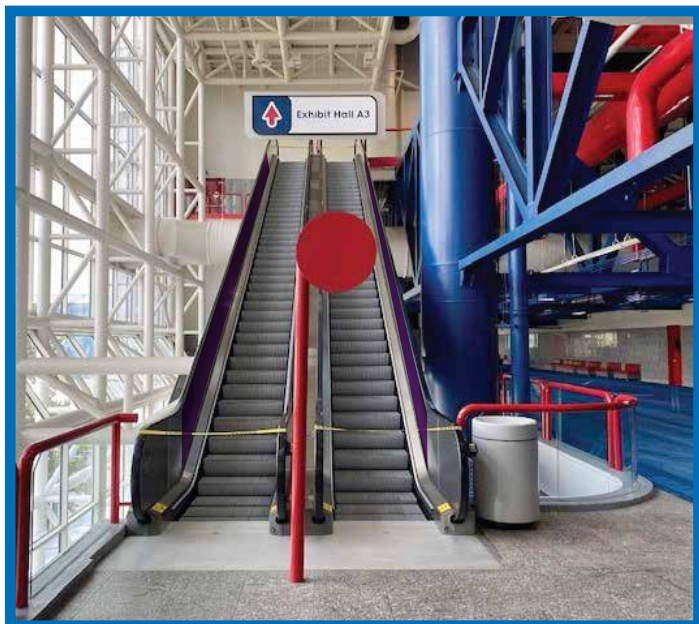


## Level 2 Escalator (Lobby A)

Lobby A, Up Into Level 3 Trade Show

OPPORTUNITY

#31



### Sponsorship Location Fee

\$11,500

### Printing & Installation Fee

\$6,061.84

### Escalators

Inside- 45'9" x 26.5" (x4)

### Additional Info

Level 2, Lobby A. This escalator takes attendees directly into the Trade Show on Level 3.



# NEW FRONTIERS IN AGRICULTURE



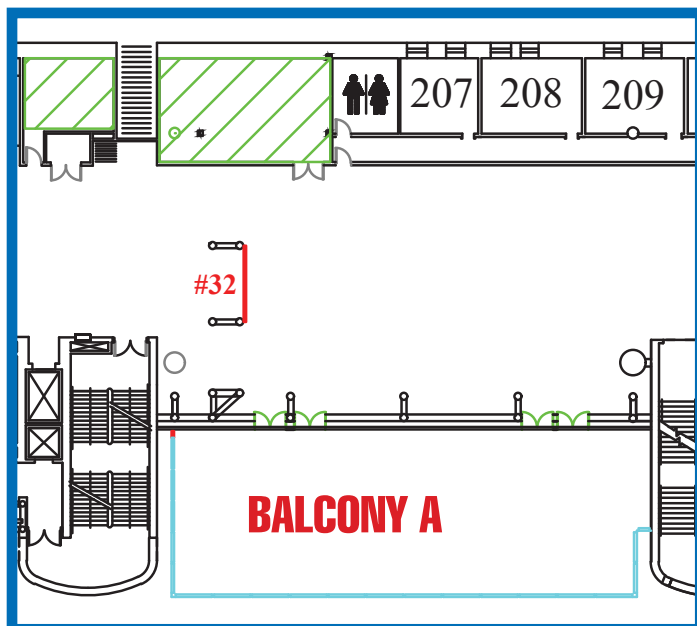
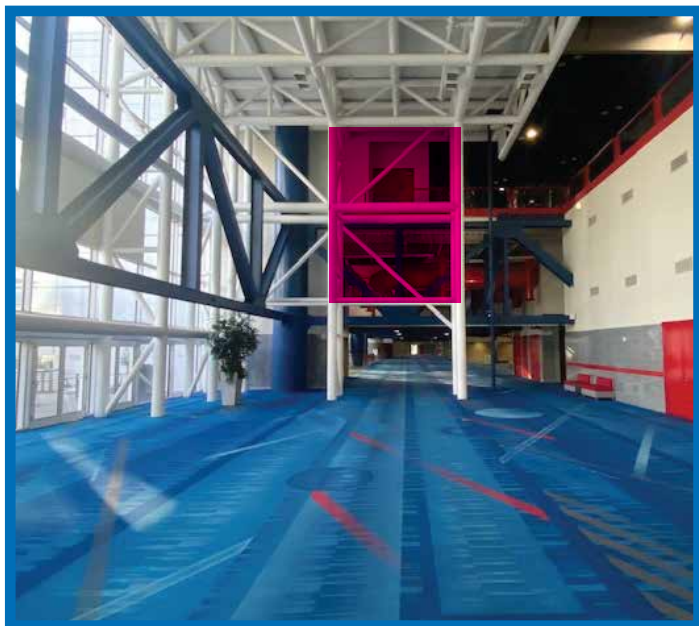
#Classic24

## Level 2 Single Sided Banner

Level 2, Lobby A/B

OPPORTUNITY

#32



### Sponsorship Location Fee

\$6,000

### Printing & Installation Fee

\$3,300

### Banner

15' x 20'

### Additional Info

Single sided banner located at level 2, Lobby A/B.



# NEW FRONTIERS IN AGRICULTURE



#Classic24

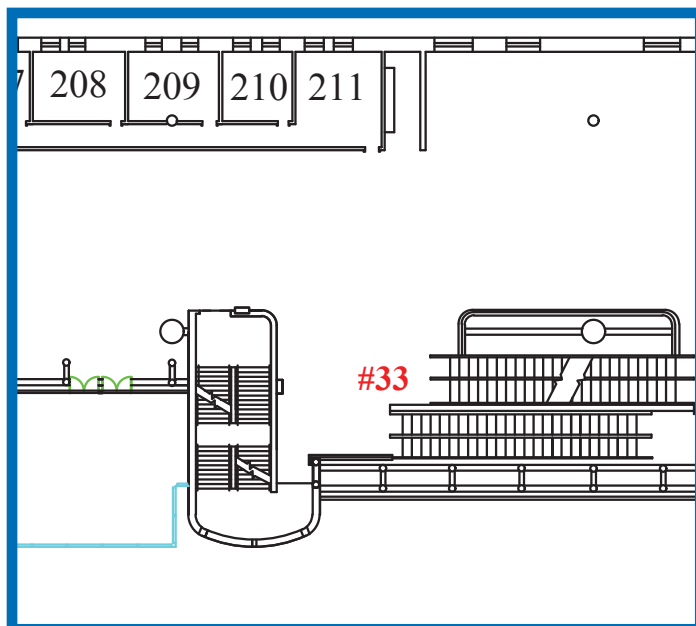


## Level 2 Escalator (Lobby B)

Lobby B, Up Into Level 3 Trade Show

OPPORTUNITY

#33



### Sponsorship Location Fee

\$11,500

### Printing & Installation Fee

\$6,774.26

### Escalators

Inside- 48'1" x 24.5" (x4)

Flat Metal- 61'6" x 11.5" (x1)

### Additional Info

Level 2, Lobby B. This escalator takes attendees directly into the Trade Show on Level 3.



# NEW FRONTIERS IN AGRICULTURE



#Classic24

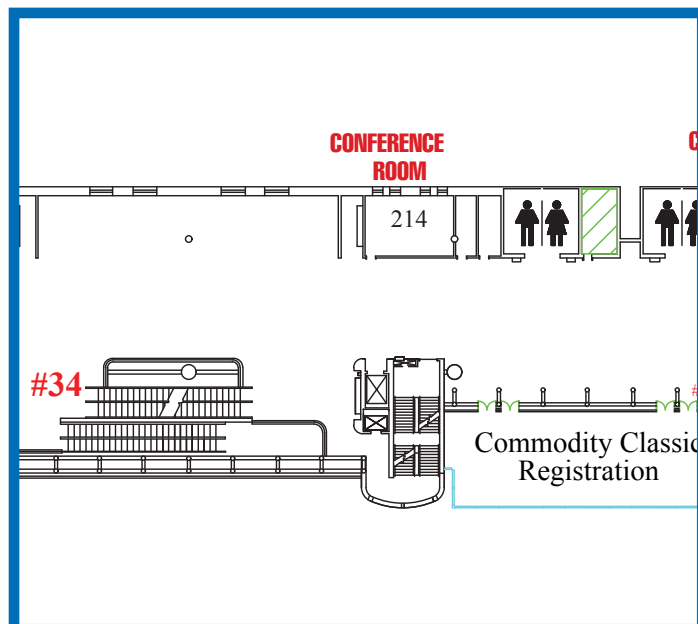


## Level 2 Escalator (Lobby C)

Lobby C, next to Commodity Classic Registration

OPPORTUNITY

#34



## Sponsorship Location Fee

\$7,000

## Printing & Installation Fee

\$6,775.46

## Escalator

Inside- 48'1" x 24.5" (x4)

Flat Metal- 61'6" x 11.5" (x1)

## Additional Info

Level 2, Lobby C, next to Commodity Classic Registration.  
This escalator takes attendees to Level 3 Education Area,  
and close to Level 3 Trade Show.





# NEW FRONTIERS IN AGRICULTURE



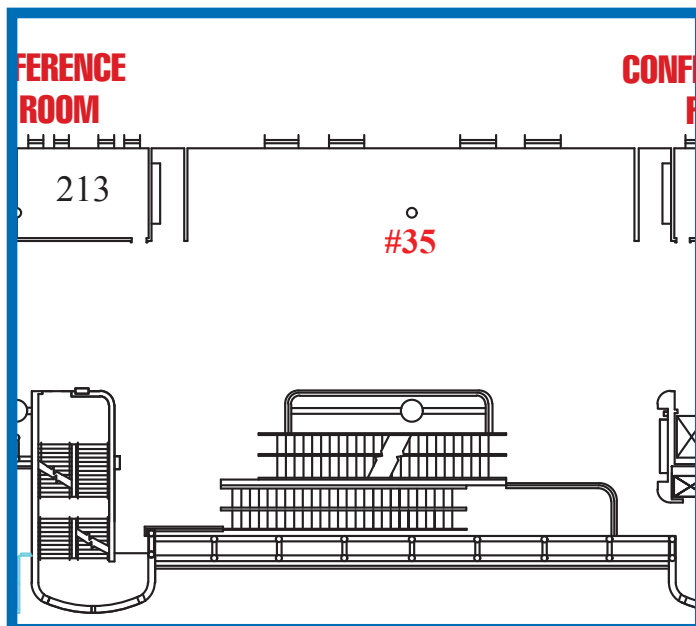
#Classic24

## Level 2 Lounge Seating with Device Charging (Lobby C)

Near Commodity Classic Registration

OPPORTUNITY

#35



### Sponsorship Location Fee

\$6,500

### Printing & Installation Fee

\$2,267.46

### Charging Cubes (x2)

Top- 48" x 48"

Side- 48" x 17" (x4)

### Glass Clings

90" Diameter (x2)

### Additional Info

This seating area is an ideal location for Commodity Classic guests to meet up with old friends who they only get to see each year at Commodity Classic, and who they see for the first time in Registration! Attendees can also recharge their devices and overlook the Level 1 Trade Show through the porthole windows in the lounge.

Sponsorship includes seating, two coffee tables, one water cooler, and up to two window clings in the porthole windows that overlook the first-floor trade show. The coffee table will be branded with graphic clings featuring your company branding and includes power outlets for attendees to charge devices. You may provide a branded water cooler wrap or your branded cups for the water cooler.





# NEW FRONTIERS IN AGRICULTURE



#Classic24

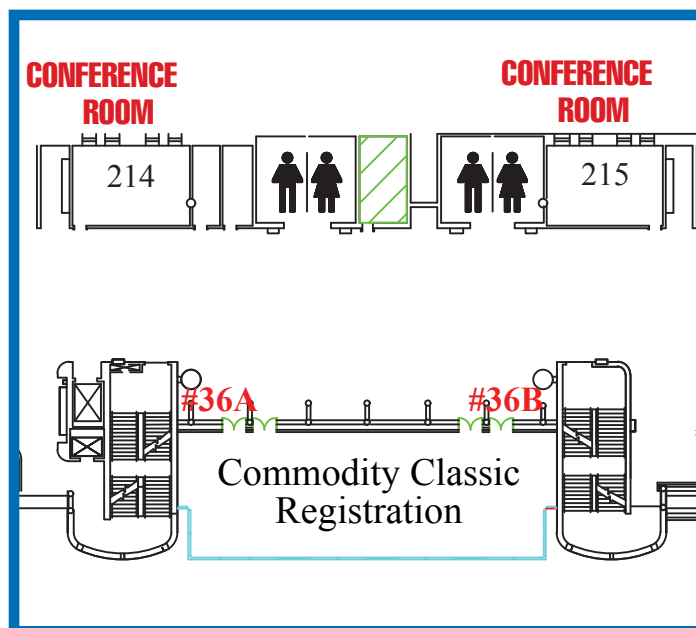
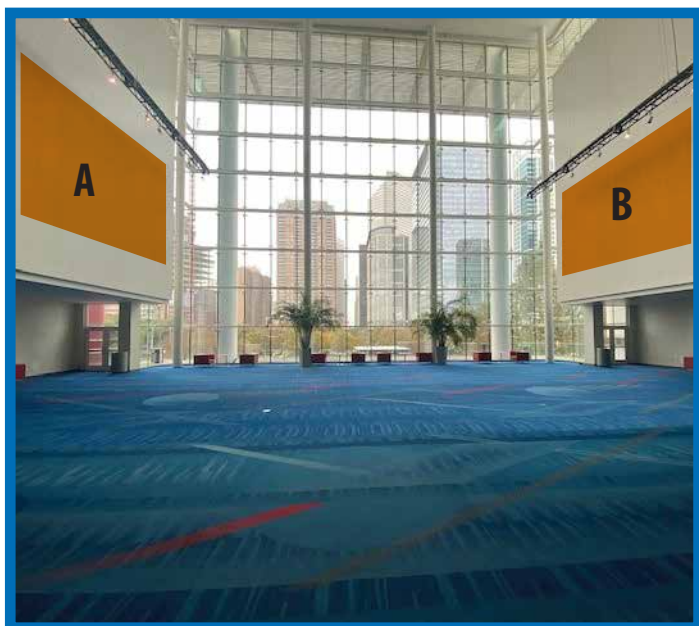


## Level 2 Registration Banners

Level 2, Lobby C/D, Commodity Classic Registration

OPPORTUNITY

#36



### Sponsorship Location Fee

**\$8,000** per banner

### Printing & Installation Fee

**\$7,040** per banner

### Banner A & B

32' x 20'

### Additional Info

These huge banners will be seen throughout the show by all attendees entering Registration, walking past Registration and even from the Level 3 Lobby! Sponsors may purchase one or both banners.



# NEW FRONTIERS IN AGRICULTURE



#Classic24

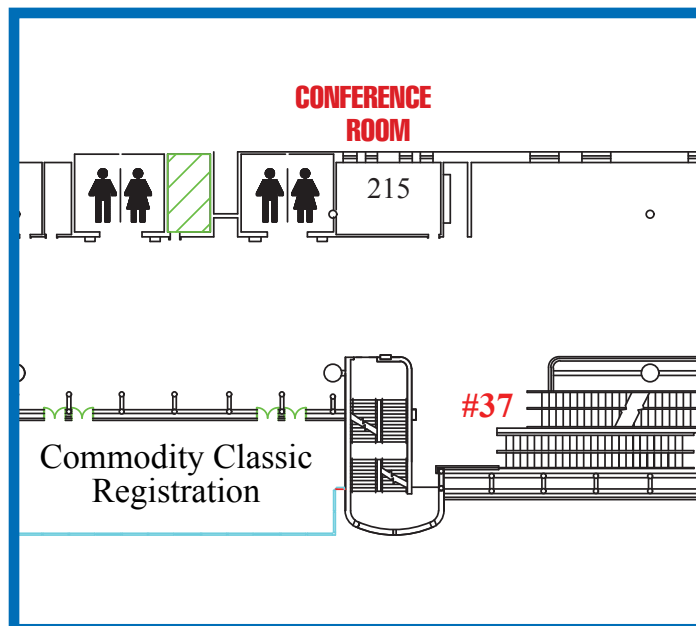


## Level 2 Escalator (Lobby D)

Lobby D, next to Commodity Classic Registration

OPPORTUNITY

#37



## Sponsorship Location Fee

\$11,500

## Printing & Installation Fee

\$6,774.26

## Escalator

Inside- 48'1" x 24.5" (x4)

Flat Metal- 61'6" x 11.5" (x1)

## Additional Info

Level 2, Lobby D, next to Commodity Classic Registration.  
This escalator takes attendees to Level 3, outside of the  
General Session and Education rooms.





# NEW FRONTIERS IN AGRICULTURE

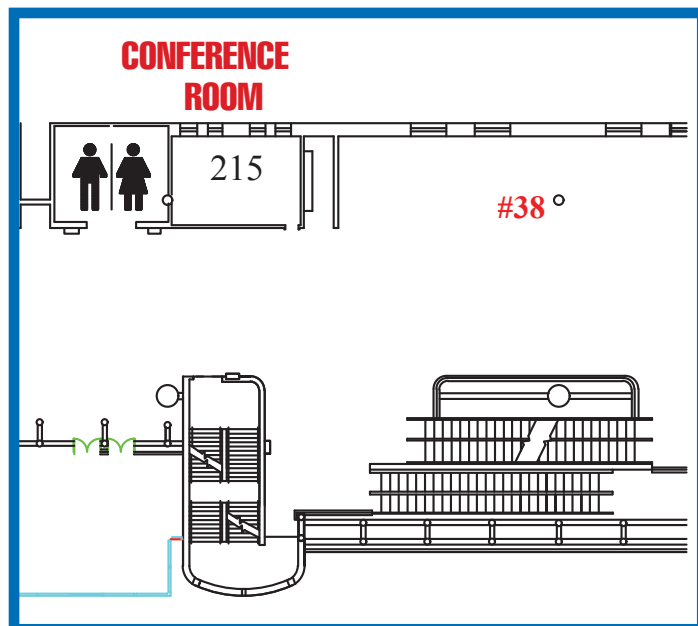


#Classic24

**Level 2 Lounge Seating with Device Charging (Lobby D)**  
Near Commodity Classic Registration

OPPORTUNITY

**#38**



**Sponsorship Location Fee**  
**\$6,500**

**Printing & Installation Fee**  
**\$2,267.46**

## Charging Cubes (x2)

Top- 48" x 48"

Side- 48" x 17" (x4)

## Additional Info

This seating area is an ideal location for Commodity Classic guests to meet up with old friends who they only get to see each year at Commodity Classic, and who they see for the first time in Registration! Attendees can also recharge their devices while they site and visit.

Sponsorship includes seating, two coffee tables, one water cooler. The coffee table will be branded with graphic clings featuring your company branding and includes power outlets for attendees to charge devices. You may provide a branded water cooler wrap or your branded cups for the water cooler. ou may provide a wall cling or banner on the wall at your lounge.







# NEW FRONTIERS IN AGRICULTURE



#Classic24

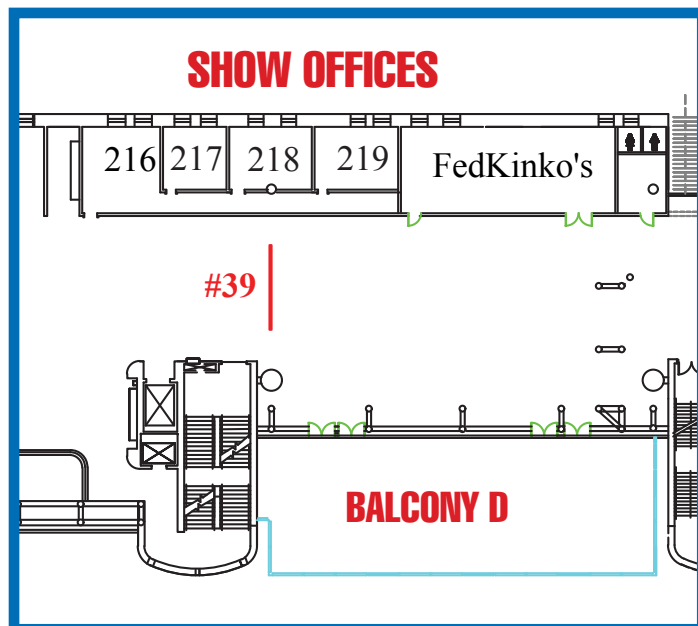
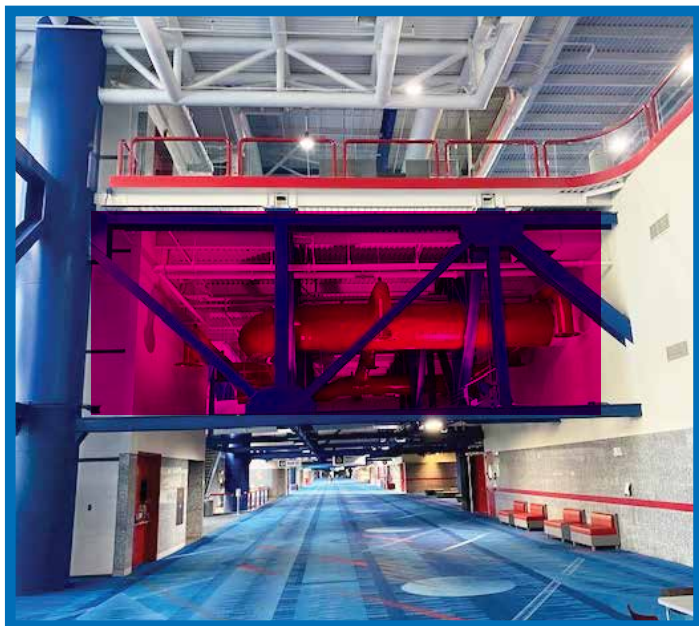


## Level 2 Single-Sided Banner

Level 2, Lobby D/E

OPPORTUNITY

#39



### Sponsorship Location Fee

\$6,000

### Printing & Installation Fee

\$5,882.80

### Banner

35' x 14' 6"

### Additional Info

Single-sided banner located at level 2, Lobby D/E.



# NEW FRONTIERS IN AGRICULTURE



#Classic24

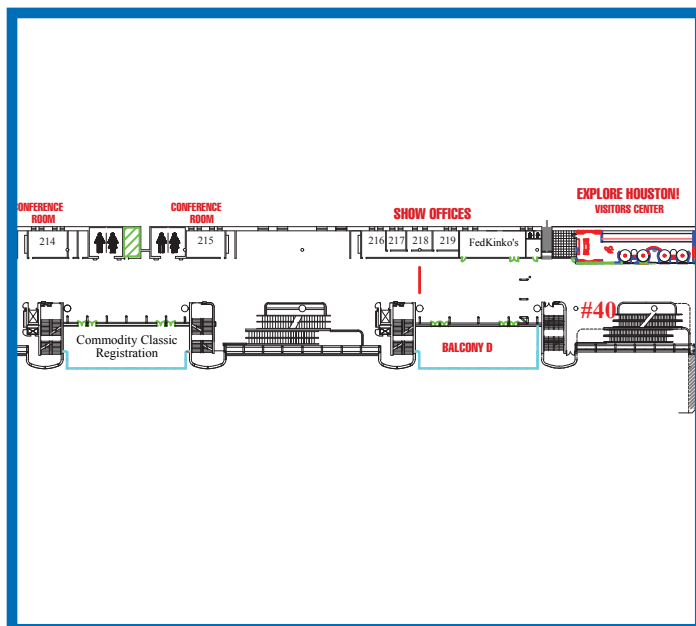


## Level 2 Escalator (Lobby E)

Lobby E, next to Skybridge to Hilton Americas and across from Starbucks

OPPORTUNITY

#40



## Sponsorship Location Fee

\$7,000

## Printing & Installation Fee

\$6,061.84

## Escalator

Inside- 45'9" x 26.5" (x4)

## Additional Info

Level 2, Lobby E, next to Skybridge to Hilton Americas and across from Starbucks. This escalator is close to the shuttle drop-off and takes attendees to Level 3 functions including the General Session, Education and Trade Show.



# NEW FRONTIERS IN AGRICULTURE



#Classic24

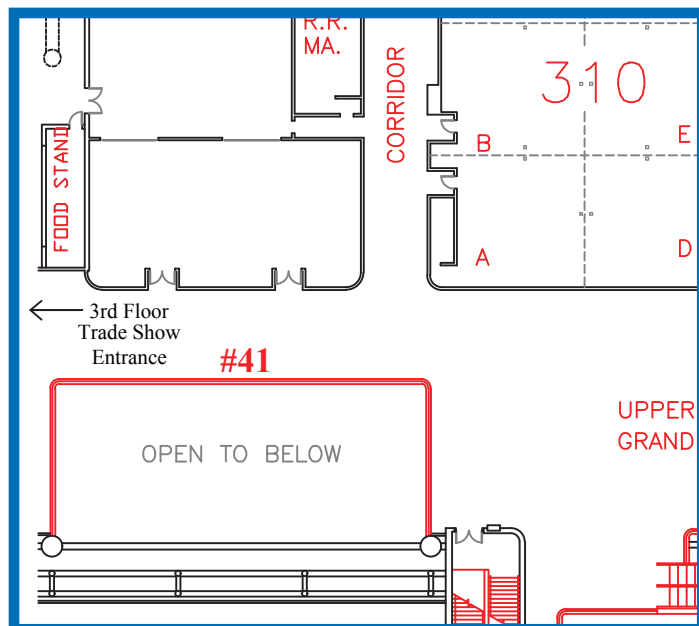


## Glass Clings

Level 3 Outside of Trade Show Doors

OPPORTUNITY

#41



## Sponsorship Location Fee

\$12,000

## Printing & Installation Fee

\$2,752.85

## Window Clings

77" x 35.75" (x9)

## Additional Info

Window clings are on half wall (not exterior windows) and are just outside of Level 3 Trade Show entrance, near education.



# NEW FRONTIERS IN AGRICULTURE



#Classic24

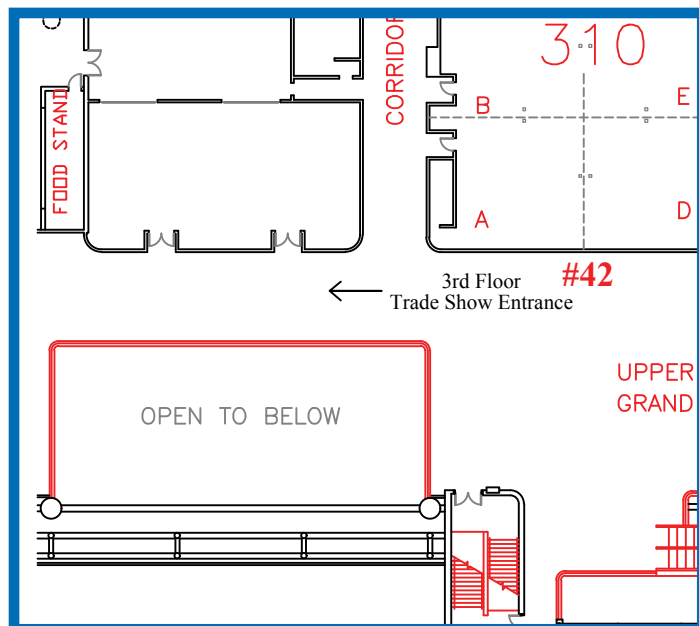


**Banner Outside Education Room 310**

Level 3

OPPORTUNITY

**#42**



**Sponsorship Location Fee**

\$6,000

**Printing & Installation Fee**

\$2,104.66

## Banner

14' W x 13' 8"H

## Additional Info

This foamcore banner will be clung to the glass block wall along the main hallway where Commodity Classic Educational Sessions will be held. This spot will see a lot of foot traffic with attendees passing through for education, Level 3 Trade Show and the General Session.





# NEW FRONTIERS IN AGRICULTURE



#Classic24

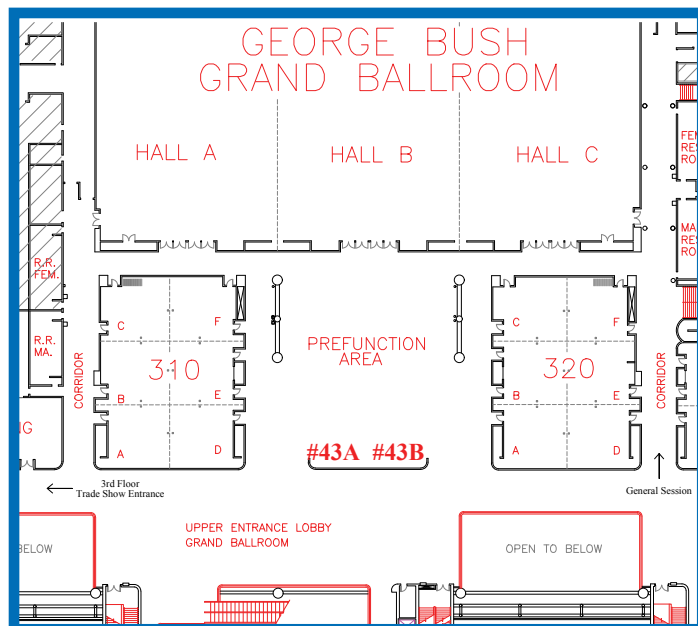


## Banners Inside Education

Level 3, Inside Education Prefunction Area

OPPORTUNITY

#43



### Sponsorship Location Fee

\$7,500 per banner

### Printing & Installation Fee

\$TBD per banner

### Banner A & B

TBD

### Additional Info

Banners will be seen by anyone attending Commodity Classic Educational Sessions as well as by those sitting in the Pre-function area watching the Video Wall. Sponsors may purchase one or both banners. Banners are single-sided



# NEW FRONTIERS IN AGRICULTURE



#Classic24

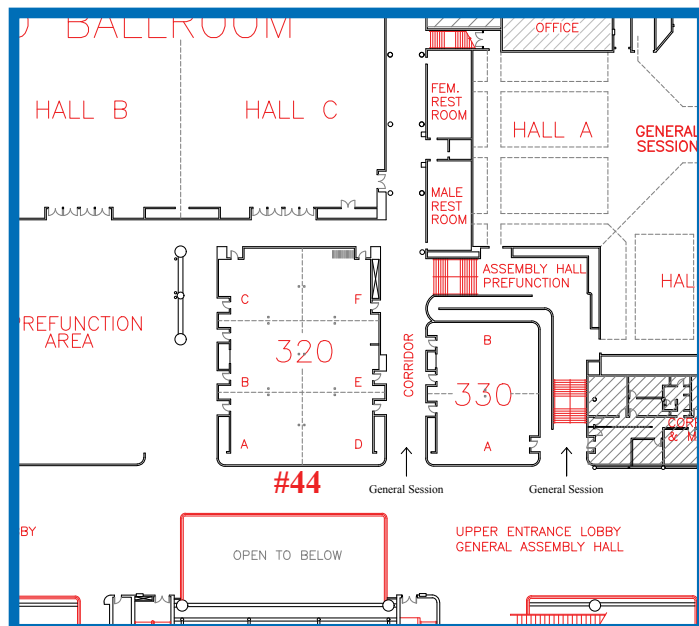


**Banner Outside Education Room 320**

Level 3

OPPORTUNITY

**#44**



**Sponsorship Location Fee**

\$6,000

**Printing & Installation Fee**

\$2,104.66

## Banner

14' W x 13' 8"H

## Additional Info

This foamcore banner will be clung to the glass block wall along the main hallway where Commodity Classic Educational Sessions will be held. This spot will see a lot of foot traffic with attendees passing through for education, Level 3 Trade Show and the General Session.



# NEW FRONTIERS IN AGRICULTURE



#Classic24

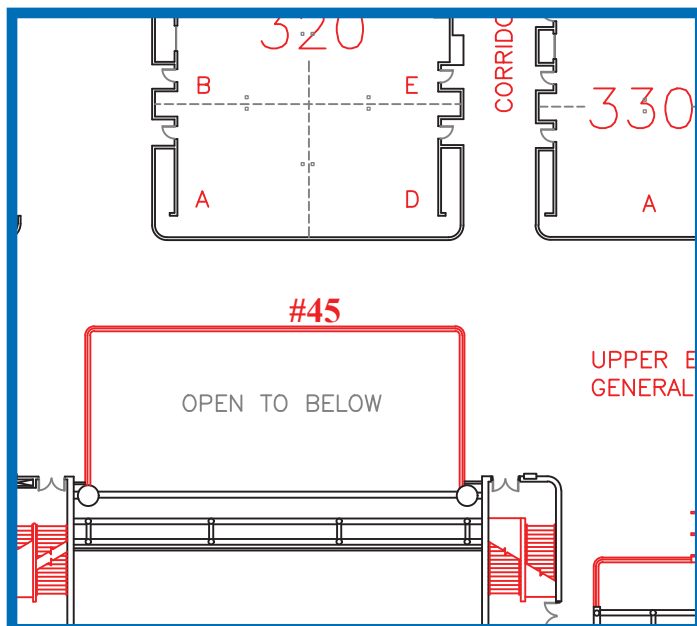


## Glass Clings

Level 3, Across from Room 320

OPPORTUNITY

#45



## Sponsorship Location Fee

\$12,000

## Printing & Installation Fee

\$2,580.66

## Glass Clings

77" x 35.75" (x9)

## Additional Info

Window clings are on half wall (not exterior windows) and face into Level 3 Lobby. This spot will see a lot of foot traffic with attendees passing through for education, Level 3 Trade Show and the General Session.



# NEW FRONTIERS IN AGRICULTURE



#Classic24

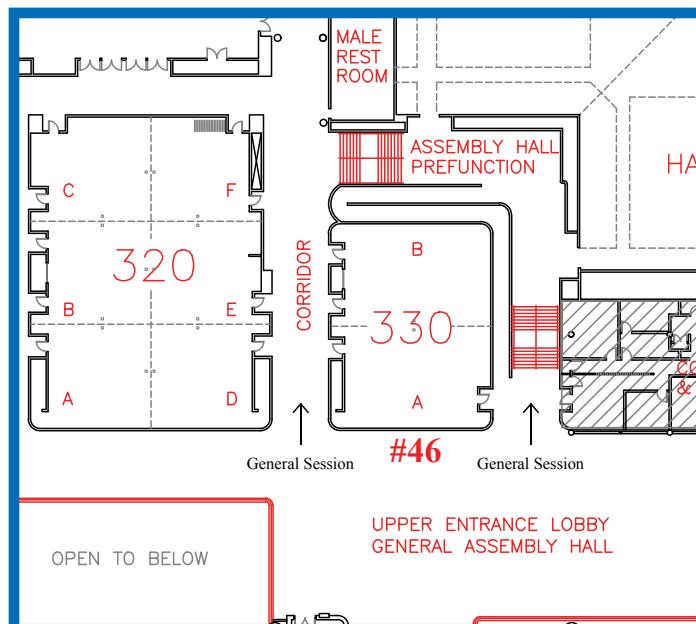


## Banner Outside Education Room 330

Level 3

OPPORTUNITY

#46



### Sponsorship Location Fee

\$6,000

### Printing & Installation Fee

\$2,104.66

### Banner

14' W x 13' 8"H

### Additional Info

This foamcore banner will be clung to the glass block wall along the main hallway where Commodity Classic Educational Sessions will be held and is next to the General Session. This spot will see a lot of foot traffic with attendees passing through for education, Level 3 Trade Show and the General Session.





# NEW FRONTIERS IN AGRICULTURE



#Classic24

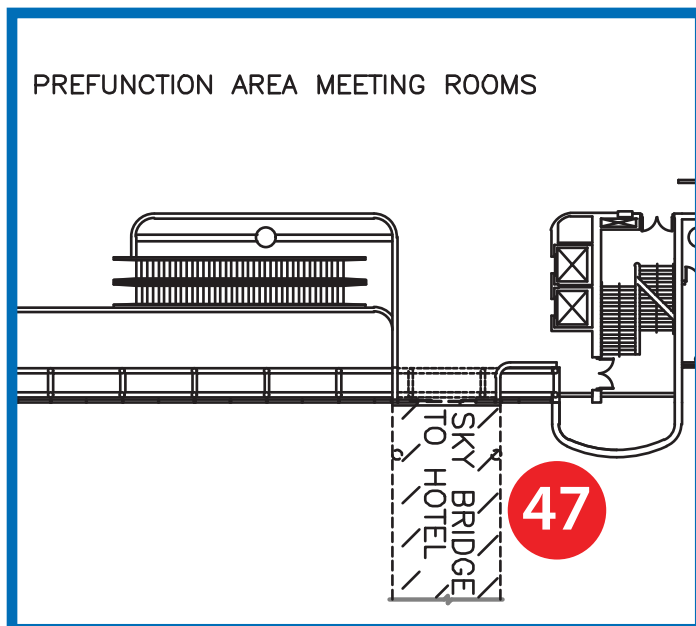


## Level 2 Skybridge to Hilton Americas

TBD

OPPORTUNITY

#47



### Sponsorship Location Fee

\$TBD

### Printing & Installation Fee

\$2,067

### Cling

14' x 6'

### Additional Info

This skybridge connects from the Hilton Americas to the Convention Center Level 2, near Lobby E escalator.

### Floor Cling (x3)

5' x 5'



# NEW FRONTIERS IN AGRICULTURE



#Classic24



## Level 3 Skybridge to Hilton Americas TBD

OPPORTUNITY

#48



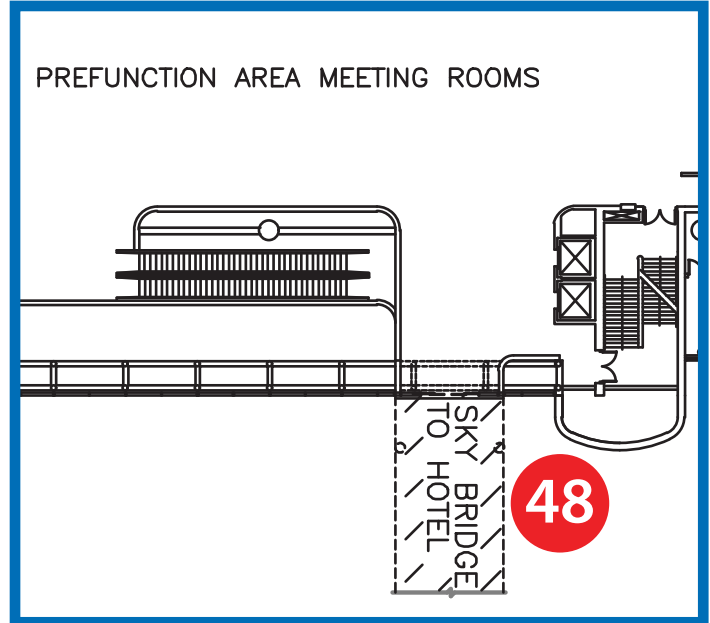
**Sponsorship Location Fee**  
\$TBD

### Cling

14' x 6'

### Floor Cling (x3)

5' x 5'



**Printing & Installation Fee**  
\$2,067

### Additional Info

This skybridge connects from the Hilton Americas to the Convention Center Level 3, near Lobby E escalator.



# NEW FRONTIERS IN AGRICULTURE



#Classic24

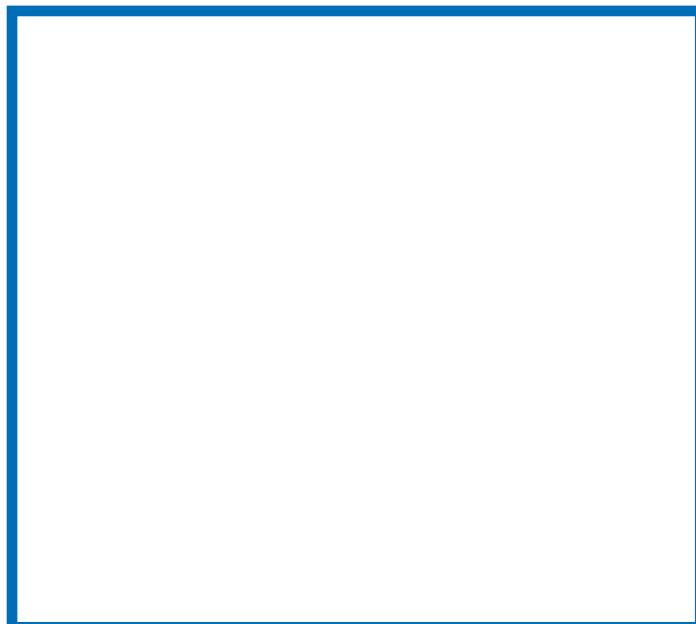


## Level 2 Skybridge to Marriott Marquis

Floro Clings

OPPORTUNITY

#49



### Sponsorship Location Fee

\$TBD

### Printing & Installation Fee

\$975

### Floor Cling (x3)

5' x 5'

### Additional Info

This skybridge connects from the Marriott Marquis to the Convention Center Level 2, near Lobby A escalator.